

BAXI



**Nuvola Duo-Tec +
SPARE PARTS CATALOGUE**

- June 2016 -

HOW TO READ THE SPARE PARTS CATALOGUE

In the spare part catalogue, after the exploded diagrams, there are the components lists of the boilers; this is the meaning of the different columns:

Pos. Identification number of the component in the exploded diagram of the boiler.

Description Short description of the component.

Code BAXI S.p.A. code of the component.

Tab. XX XX is the exploded diagram number of the boiler taken into consideration.

From serial number Date (year and week) identifying the beginning of production of a component (taken from the serial number of the boiler).
e.g. 1201: year 2012 (1 identifies the decade 2010-2019; 2 identifies the year)– 01th week.
If the box is empty, the component is in use from the beginning of production of the boiler.

To serial number Date (year and week) identifying the end of production of a component (taken from the serial number of the boiler).
e.g. 1225: year 2012 (1 identifies the decade 2010-2019; 2 identifies the year) – 25th week.
If the box is empty, the component is still in use.

Interchangeable It identifies the interchangeability between the new component and the old one.
YES: components are interchangeable.
NO: components are not interchangeable

TABELLA COLLEGAMENTO CODICE CALDAIA - ESPLOSO TABLEAU CONNECTION CODEX CHAUDIERE - VUE ECLATEE BOILERS CONNECTION BOARD - EXPLODED VIEW

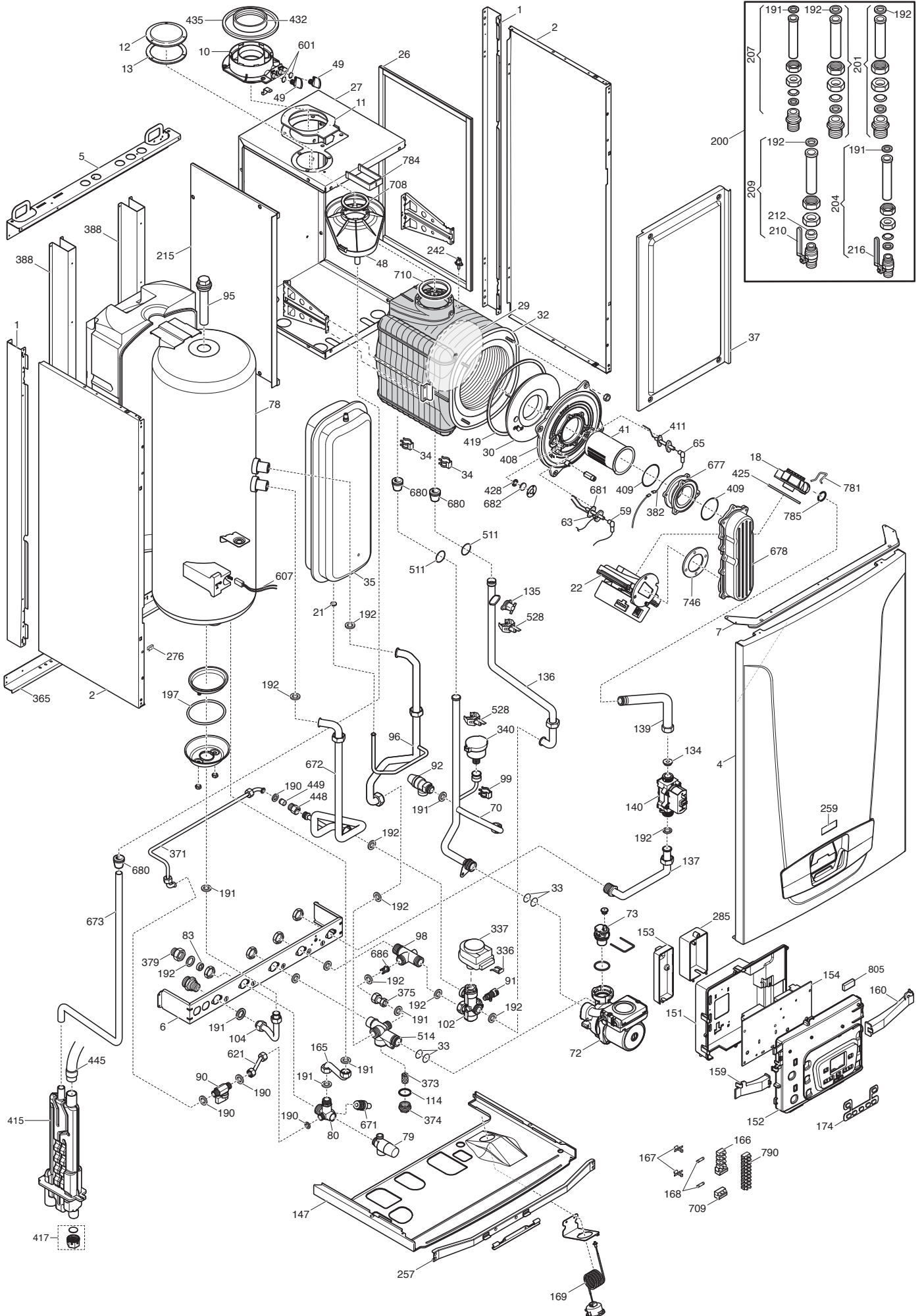
BOILER CODE	BOILER DESCRIPTION	EXPLODED REF.
CODICE CALDAIA	DESCRIZIONE CALDAIA	RIF. ESPLOSO
CODIGO CALDERA	DESCRIPCION CALDERA	REF. EXPLOSIONADO
CODE CHAUDIÈRE	DESCRIPTION CHAUDIÈRE	RÉF. EXPLOSÉE
721955301/2/3	NUVOLA DUO-TEC + 16 GA	Tab 562
721955401/2/3	NUVOLA DUO-TEC + 24 GA	Tab 562
721955501/2/3	NUVOLA DUO-TEC + 33 GA VES	Tab 626

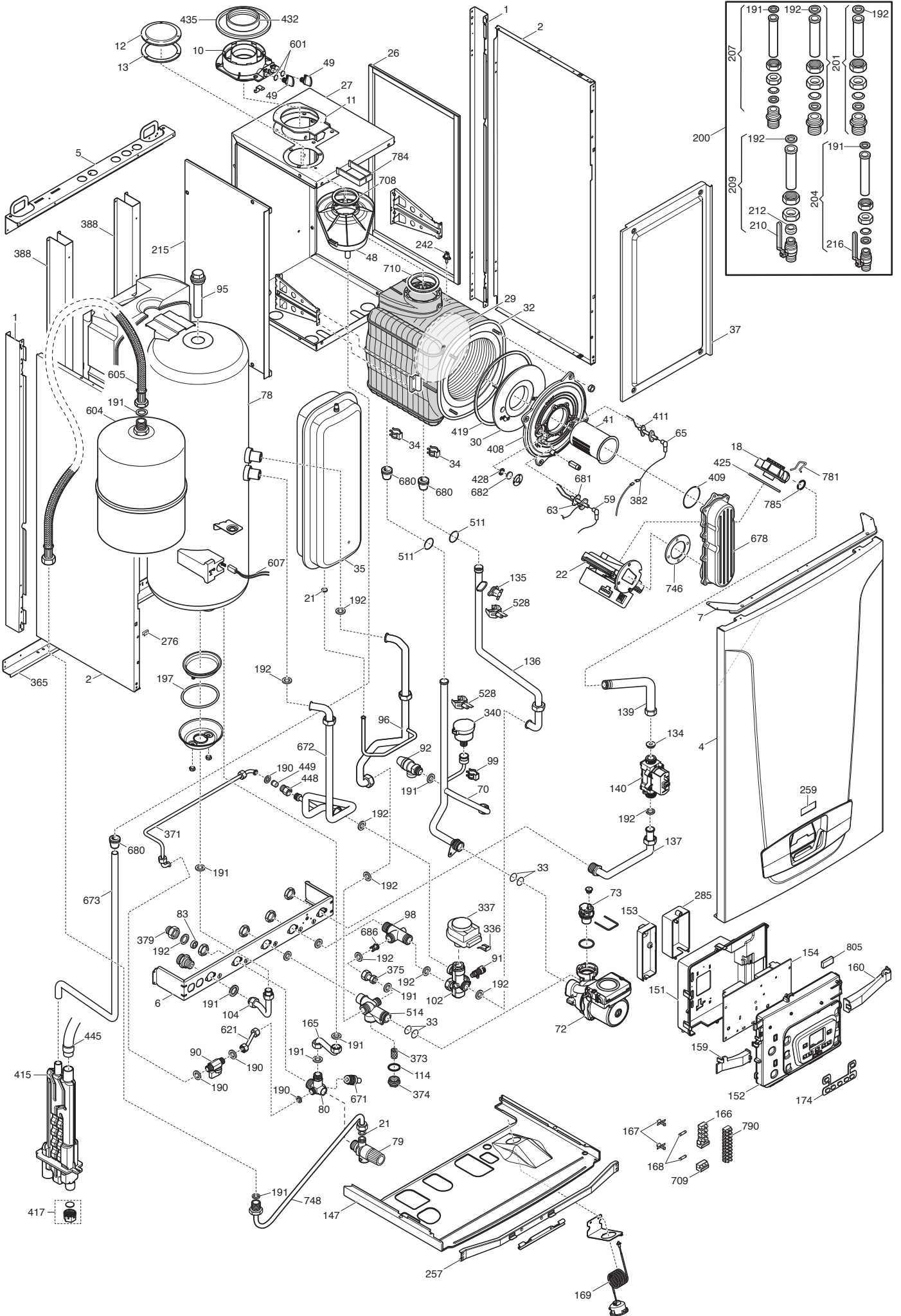
Pos	Code	Description code				To serial number	From serial number	Interchangeable:
			721955301/2/3 16 GA	721955401/2/3 24 GA	721955501/2/3 33 GA VES			
92	9950600	SAFETY VALVE 3 BAR	•	•	•			
95	5668740	TAP/ANODE ASSEMBLY	•	•	•			
96	710339000	COIL PIPE ASS.	•	•	•			
98	5212040	PIPE (HEATING SYSTEM-BY PASS)	•	•	•			
99	8380850	FIXING CLIP	•	•	•			
102	5663040	3 PORT VALVE ASSEMBLY	•	•	•			
104	5668570	SANITARY OUTLET PIPE	•	•	•			
114	5403820	O-RING 26,64 X 2,62	•	•	•			
134	710192500	INJECTOR B&P 4,4mm		•				
134	710490500	INJECTOR B&P D.4,9mm			•			
134	710502100	INJECTOR B&P 3,3 mm	•					
135	9950760	THERMOSTAT - LIMIT	•	•	•			
136	710333800	PIPE ASS. EXCHANGER/V3V	•	•	•			
137	710597400	GAS BURNER PIPE	•	•	•			
139	710597000	GAS VALVE INLET CONNECTION	•	•	•			
140	710089600	GAS VALVE B&P SGV100	•	•	•			
147	710353100	LOWER PANEL. OUTERCASE	•	•	•			
151	710018500	CONTROL PANEL COVER	•	•	•			
152	710092100	PANEL PLATE/DISPLAY ASSEMBLY	•	•	•			
153	710018200	TERMINAL BLOCK COVER	•	•	•			
154	722233100	PCB B&P HAGC03 BX01	•	•	•			
159	710345000	LEFT HINGE	•	•	•			
160	710344900	RIGHT HINGE	•	•	•			
165	5668580	SANITARY INLET PIPE ASSEMBLY	•	•	•			
166	8421590	TERMINAL BLOCK	•	•	•			
167	5405340	FUSE HOLDER	•	•	•			
168	9950580	FUSE	•	•	•			
169	9951650	MANOMETER D.40	•	•	•			
174	710126300	7 PUSH BUTTON PANEL B&P	•	•	•			
190	5404970	WASHER - SEALING G3/8	•	•	•			
191	5408970	WASHER - SEALING G1/2	•	•	•			
192	5404650	SEALING WASHER G 3/4	•	•	•			
197	5412820	ORING 85,09X5,34 EPDM	•	•	•			
200	5646560	HYDRAULIC CONNECTION SET	•	•	•			
201	5626860	HEATING CONNECTION	•	•	•			
204	5626840	DHW INLET TAP	•	•	•			
207	5625230	DHW OUTLET GROUP	•	•	•			
209	5626850	GAS TAP GROUP	•	•	•			
210	9950830	GAS TAP	•	•	•			
212	5408330	BICONIC GASKET	•	•	•			
215	710334000	COMBUSTION CHAMBER SX SIDE	•	•	•			
216	5626790	FILLING TAP	•	•	•			

Nuvola Duo-Tec +

30/06/2016

Pos	Code	Description code				To serial number	From serial number	Interchangeable:
			721955301/2/3 16 GA	721955401/2/3 24 GA	721955501/2/3 33 GA VES			
242	8435270	NTC SENSOR	•	•	•			
257	710347300	FIX DASHBOARD TRAVERSE	•	•	•			
259	710419300	BRAND BAXI	•	•	•			
276	1340440	CAPTIVE NUT - LARGE	•	•	•			
285	710083600	COVER CLIP-IN	•	•	•			
336	8380680	CLIP-RETAINING	•	•	•			
337	5694580	3 WAY VALVE MOTOR	•	•	•			
340	710109100	PRESSURE SENSOR	•	•	•			
365	5106530	LOWER SUPPORT	•	•	•			
371	710340900	FILLING TAP ASS. D.8	•	•	•			
373	5109080	FILTER-CENTRAL HEATING	•	•	•			
374	5212030	PLUG FILTER M30	•	•	•			
375	5663030	BY-PASS PIPE ASSEMBLY	•	•	•			
379	5206120	CONNECTING ELEMENT	•	•	•			
382	710549500	CABLE DETECTION ELECTRODE	•	•	•			
388	5114060	SEALED CHAMBER ASSY	•	•	•			
408	711571000	COMB.CHAMBER UPPER COVER	•	•	•			
409	721543100	BURNER GASKET ASS.	•	•	•			
411	710185200	FLAME SENSING ELEC.GASKET	•	•	•			
415	722050300	SIPHON BODY H200	•	•	•	1609		
415	765806300	SIPHON BODY H200	•	•	•		1610	YES
417	721679200	PLUG SIPHON	•	•	•	1612		
419	5411000	COMB.CHAMBER GASKET	•	•	•			
425	710042400	VENTURI GASKET	•	•	•			
428	5409290	GASKET	•	•	•			
432	5410420	WASHER DIA 60 OUTLET BEND	•	•	•			
435	5407550	WASHER DIA100 OUTER ADAPT SEAL	•	•	•			
445	722342600	PIPE EXCHANGER/SIPHON L300	•	•	•			
448	5209230	RETAINING VALVE CONNECTION	•	•	•			
449	5640030	RETAINING VALVE	•	•	•			
511	5404600	O.R. 17,86x2,62	•	•	•			
514	710337800	PUMP FILTER CONNEC. ASS.	•	•	•			
528	8435500	NTC SENSOR D18-ITS2410201/0-	•	•	•			
601	5408560	O-RING 8,73x1,78	•	•	•			
604	5661600	SANITARY EXPANSION VESSEL			•			
605	5621280	FLEX PIPE'S SANIT.EXPAN.VESSEL			•			
607	8434930	CONTACT SENSOR	•	•	•			
621	5663120	FILLING PIPE D.8	•	•	•			
671	5646780	DRAINING TAP G 1/2 (COPPER)	•	•	•			
672	710338900	COIL/TAP PIPE ASSEMBLY	•	•	•			
673	710333000	PIPE CONNECTION SYPHO	•	•	•			
677	5212930	EXTENSION	•	•				





BAXI

NOTE : _____

BAXI

BAXI S.p.A.
Via Trozzetti, 20
36061 BASSANO DEL GRAPPA (VI)
ITALY
Tel. +390424517111
Telefax +390424517379
E-mail. service@baxi.it