

# WESTEN

The smart choice for your home comfort



## quasar D

# SPARE PARTS CATALOGUE

- January 2015 -



## HOW TO READ THE SPARE PARTS CATALOGUE

In the spare part catalogue, after the exploded diagrams, there are the components lists of the boilers; this is the meaning of the different columns:

Pos.	Identification number of the component in the exploded diagram of the boiler.
Description	Short description of the component.
Code	BAXI S.p.A. code of the component.
Tab. XX	XX is the exploded diagram number of the boiler taken into consideration.

### Until 31th December 2011

From serial number	Date (year and week) identifying the beginning of production of a component (taken from the serial number of the boiler). e.g. B005: year 2000 (B identifies the decade 2000-2009; 0 identifies the year) – 5th week. If the box is empty, the component is in use from the beginning of production of the boiler.
To serial number	Date (year and week) identifying the end of production of a component (taken from the serial number of the boiler). e.g. B012: year 2000 (B identifies the decade 2000-2009; 0 identifies the year) – 12th week. If the box is empty, the component is still in use.
Interchangeable	It identifies the interchangeability between the new component and the old one. YES: components are interchangeable. NO: components are not interchangeable.

### From 1st January 2012

From serial number	Date (year and week) identifying the beginning of production of a component (taken from the serial number of the boiler). e.g. 1201: year 2012 (1 identifies the decade 2010-2019; 2 identifies the year) – 01th week. If the box is empty, the component is in use from the beginning of production of the boiler.
To serial number	Date (year and week) identifying the end of production of a component (taken from the serial number of the boiler). e.g. 1225: year 2012 (1 identifies the decade 2010-2019; 2 identifies the year) – 25th week. If the box is empty, the component is still in use.
Interchangeable	It identifies the interchangeability between the new component and the old one. YES: components are interchangeable. NO: components are not interchangeable.

## TABELLA COLLEGAMENTO CODICE CALDAIA - ESPLOSO TABLEAU CONNECTION CODEX CHAUDIERE - VUE ECLATEE BOILERS CONNECTION BOARD - EXPLODED VIEW

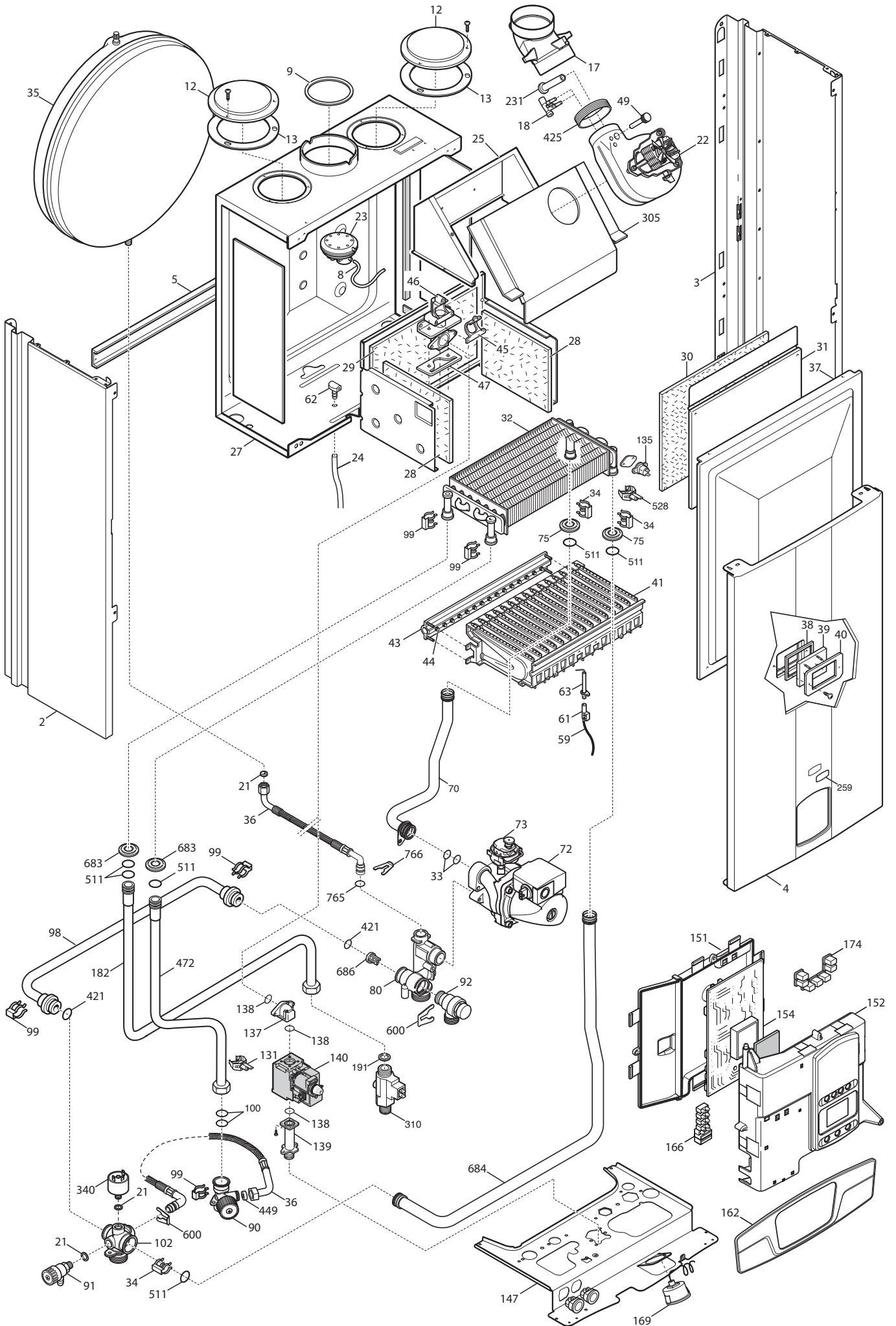
<b>BOILER CODE</b>	<b>BOILER DESCRIPTION</b>	<b>EXPLODED REF.</b>
<b>CODICE CALDAIA</b>	<b>DESCRIZIONE CALDAIA</b>	<b>RIF. ESPLOSO</b>
<b>CODIGO CALDERA</b>	<b>DESCRIPCION CALDERA</b>	<b>REF. EXPLOSIONADO</b>
<b>CODE CHAUDIÈRE</b>	<b>DESCRIPTION CHAUDIÈRE</b>	<b>RÉF. EXPLOSÉE</b>
BYH442243972	QUASAR D 24	Tab 396
BYH442243971	QUASAR D 24	Tab 396
BYH442243970	QUASAR D 24	Tab 378
BYH446243972	QUASAR D 24F	Tab 395
BYH446243971	QUASAR D 24F	Tab 395
BYH446243970	QUASAR D 24F	Tab 377



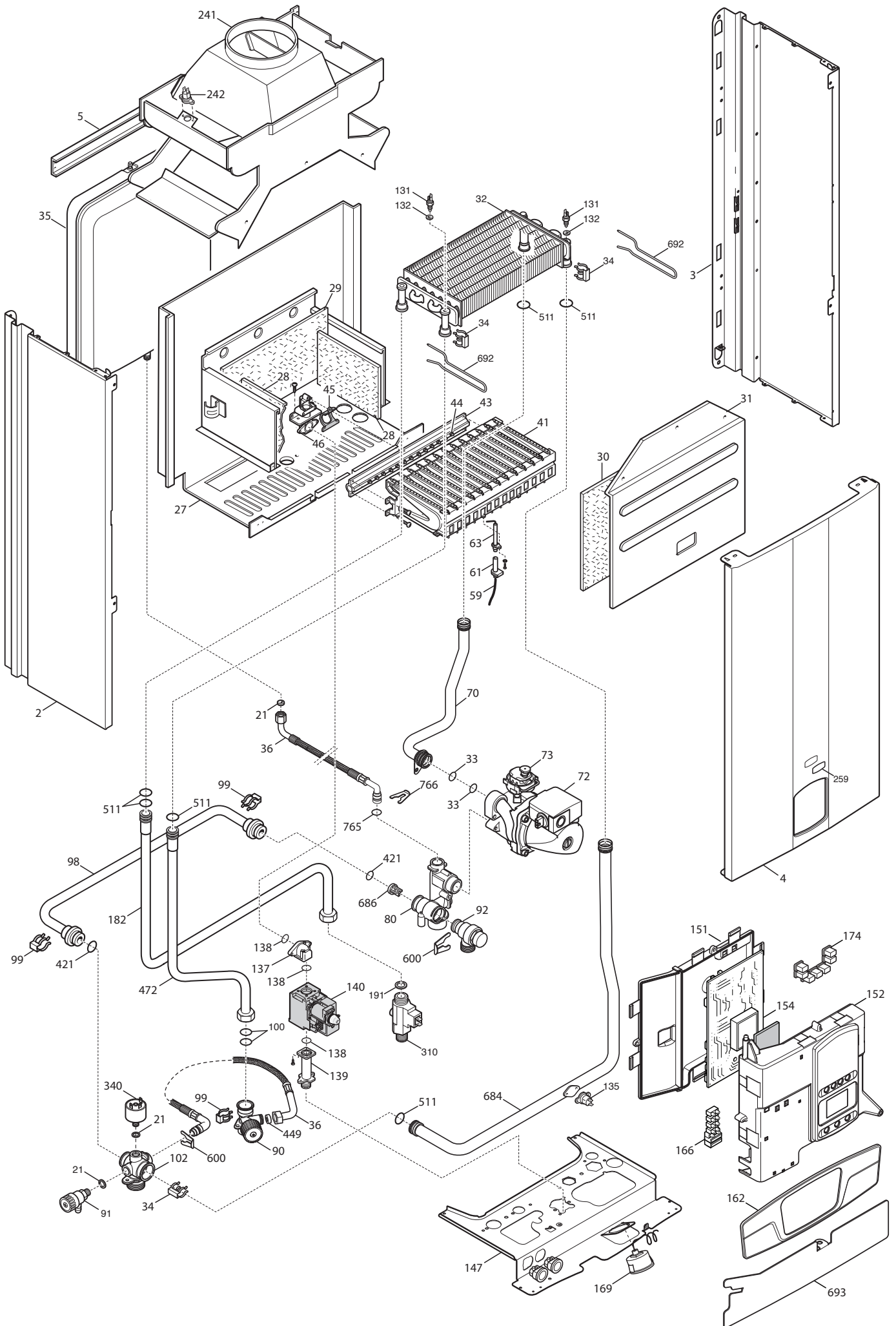
Pos	Code	Description code	BYH44243970 24	BYH44243971 24	BYH44243972 24	24 F	BYH44243970 24 F	BYH44243971 24 F	BYH44243972 24 F	To serial number	From serial number	Intercha ngeable:
35	5693920	CIRC.EXPANS.VESSEL 6I CIMM							•			
35	5693920	CIRC.EXPANS.VESSEL 6I CIMM				•	•					YES
35	5695230	CIRC.EXPANS.VESSEL 6I ZILMET				•	•			C012		
36	5698830	PIPE EXPANSION VESSEL	•	•	•	•	•	•				
37	5663830	SEALED CHAMBER FRONT PANEL				•	•	•				
38	5401610	VIEWING WINDOW GASKET				•	•	•				
39	5203930	VIEWING WINDOW				•	•	•				
40	5115590	SURROUND-SIGHT GLASS				•	•	•				
41	5663710	BURNER ASSEMBLY (13 ELEM.)	•	•	•							
41	5700530	BURNER ASSEMBLY 11 ELEMENTS				•	•	•				
43	5698690	GAS RAMP 13HOLES/INJECT. d1,18	•	•	•							
43	5700500	GAS RAMP 11 HOLES/INJECT d.1,35				•	•	•				
44	5666390	L.P.G. INJECTORS KIT	•	•	•							
44	5669460	NATURAL GAS INJECTORS KIT	•	•	•							
44	5704730	KIT TRANSF.GAS G31 11x0,85				•	•	•				
44	5705280	KIT TRANSF.GAS G20 11x1,35				•	•					
45	5407940	GASKET-BURNER MANIFOLD	•	•	•	•	•	•				
46	5657180	ADAPTOR-MANIFOLD	•	•	•	•	•	•				
47	5407810	GASKET-MANIFOLD ADAPTOR				•	•	•				
49	5409520	HOSE ADAPTER CAP				•	•	•				
59	8612400	IGNITION CABLE L=250 ECO4	•	•		•	•			C112		
59	710430800	IGNITION CABLE L=250 RESIST.	•	•		•	•					YES
59	710430800	IGNITION CABLE L=250 RESIST.			•			•				
61	5407830	INSULATION BOOT - ELECTRODE	•	•	•	•	•	•				
62	5409570	SEALED CHAMBER HOSE ADAPTER				•	•	•				
63	8422570	ELECTRODE - IGNITION	•	•	•	•	•	•				
70	5700340	ASS.PIPE PUMP/EXCHANGER	•	•	•							
70	5700550	PIPE ASS.PUMP/EXCH.MAIN4 FF225				•	•	•		1438		
70	711216000	PIPE ASS.PUMP/EXCH.MAIN4 FF225				•	•	•			1439	YES
72	5698260	PUMP ONE SPEED 5meters WILO	•	•	•	•	•	•				
73	710139500	AUTOMATIC AIR VENT	•	•	•	•	•	•				
75	5404670	GROMMET - PIPE ASSEMBLY				•	•	•				
80	5214590	HYDRAULIC INLET GROUP/PUMP	•	•	•	•	•	•				
90	5700370	CONNECTION CH OUTLET/FILLING	•	•		•	•			C007		
90	710224400	CONNECTION CH OUTLET/FILLING			•			•				
90	710224400	CONNECTION CH OUTLET/FILLING	•	•		•	•				C008	YES
91	5652030	DRAINING TAP	•	•	•	•	•	•				
92	710071200	SAFETY VALVE 3 bar NOVASFER	•	•	•	•	•	•				
98	5214610	BY-PASS PIPE MAIN 4	•	•	•	•	•	•				
99	8380850	FIXING CLIP	•	•	•	•	•	•				
100	5406630	O-RING	•	•	•	•	•	•		1321		
100	711296900	O-RING 13,94X2,62 TFL	•	•	•	•	•	•			1322	YES

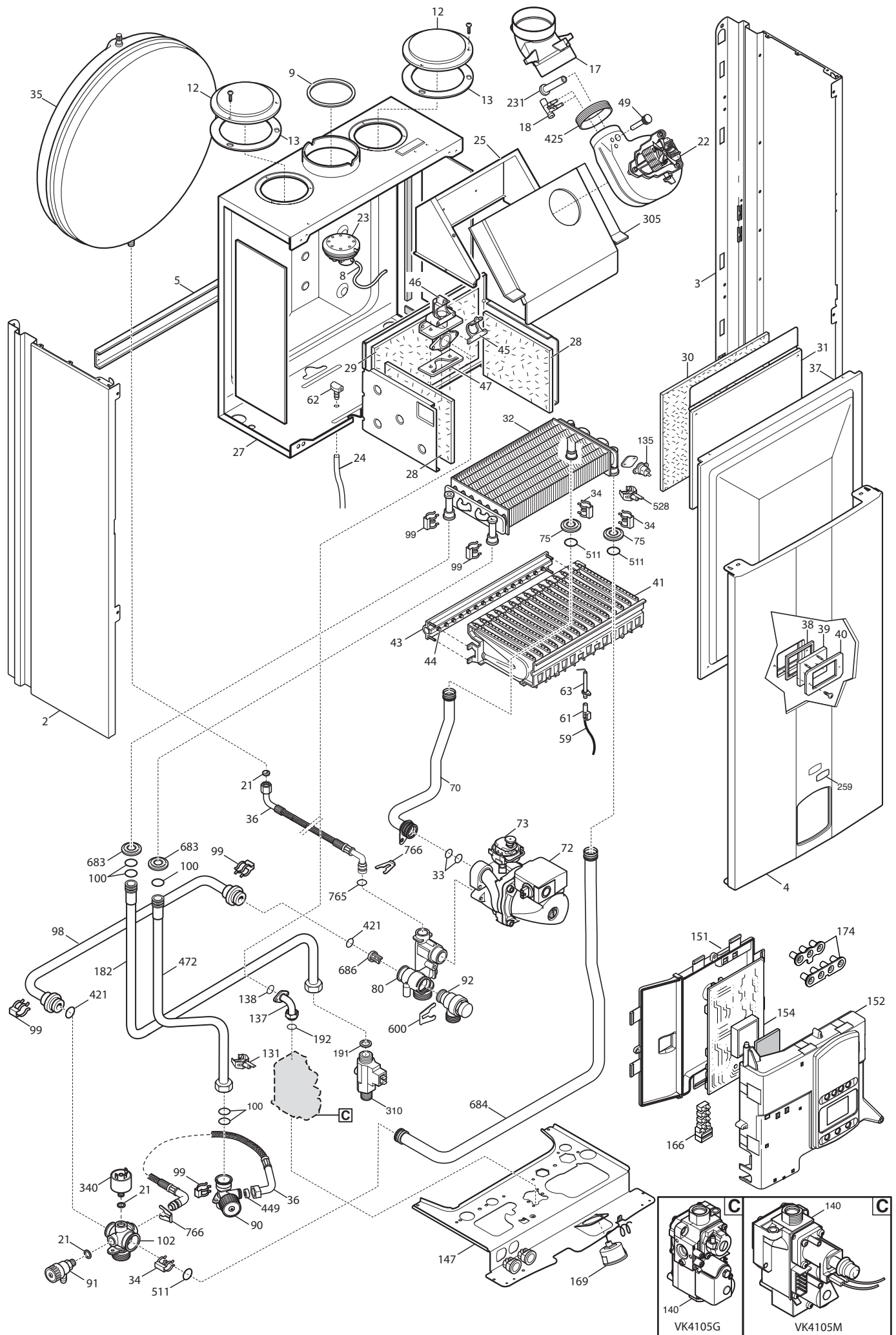


Pos	Code	Description code	BYH44243970	BYH44243971	BYH44243972	BYH44243970	BYH44243971	BYH44243972	To serial number	From serial number	Interchangeable:
			24	24	24	24 F	24 F	24 F			
310	710228100	FLOW SWITCH BITRON		•				•			
340	9951690	PRESSURE SWITCH	•	•	•	•	•	•			
421	5408270	O-RING 11,91 X 2,62 NBR	•	•	•	•	•	•			
425	5412270	GASKET FAN HT				•	•	•			
449	5640030	RETAINING VALVE	•	•	•	•	•	•			
472	5214580	DHW INLET PIPE MAIN4 OPEN FLUE	•	•	•						
472	5214670	DHW INLET PIPE MAIN 4 FF 225				•	•	•			
511	5404600	O.R. 17,86x2,62	•	•	•	•	•	•			
528	8435500	NTC SENSOR D18-ITS2410201/0-				•	•	•			
600	710045400	CLIP FLAT d.18	•	•	•	•	•	•			
683	5408810	GASKET GAS RAMP				•	•	•			
684	5214650	PIPE EXCH./HEAT.OUTLET FF 225				•	•	•	1438		
684	5700350	PIPE EXCHANGER/HEATING OUTLET	•	•	•						
684	711216100	PIPE EXCH./HEAT.OUTLET FF 225				•	•	•		1439	YES
686	5663020	BY-PASS PLUG ASSEMBLY	•	•	•	•	•	•			
692	5114360	PRIMARY EXCHANGER CLIPS	•	•	•						
693	5117440	PRINTED CNTR. PANEL PROTECTION	•	•	•						
765	710045700	O-RING d.9,19 X 2,62	•	•	•	•	•	•		1314	YES
765	710069700	O-RING 9,19X2,62 EPDM	•	•	•	•	•	•	1313		
766	5118110	FLAT SPRING diameter 10	•	•	•	•	•	•			
999	8414540	CABLE ROOM TH	•	•	•	•	•	•			
999	8414620	POWER CABLE	•	•	•	•	•	•			
999	8419040	CABLE - EARTH	•	•	•	•	•	•			
999	8513660	FAN WIRING ECO4				•	•	•			
999	8514030	HIGH VOLTAGE WIRING MAIN 4 SIT	•			•					
999	8514040	HIGH VOLT.WIRING MAIN4 HONEYW.	•		•	•		•			
999	8514050	LOW VOLT.WIRING 12P MAIN 4 ATM	•								
999	8514060	LOW VOLT.WIRING 6P.MAIN 4 ATM.	•								
999	8514070	LOW V.WIRING 12P. MAIN4 FF 225				•		•			
999	8514080	LOW VOLT.WIRING 6P.MAIN4 FF225				•		•			
999	8514130	LOW VOLT.WIRING 12P.MAINFOUR						•			
999	8514140	WIRING BT 6P. MAINFOUR						•			
999	8514150	HIGH VOLTAGE WIRING MAINFOUR		•				•			
999	8514160	GAS VALVE WIRING MAINFOUR		•				•			
999	8514170	LOW VOLT.WIRING 12P.MAINFOUR		•							
999	8514180	LOW VOLT.WIRING 6P.MAINFOUR		•							
999	710714500	LOW POWER CABLE 12PIN MAINFOUR			•						
999	710767000	LOW V. WIRING 6P. ATM			•						











**WESTEN**

**BAXI S.p.A.**  
**Via Trozzetti, 20**  
**36061 BASSANO DEL GRAPPA (VI) ITALY**  
**Tel. +390424517111 Telefax +390424517379**  
**Web site: [www.baxi.it](http://www.baxi.it) e-mail: [service@baxi.it](mailto:service@baxi.it)**