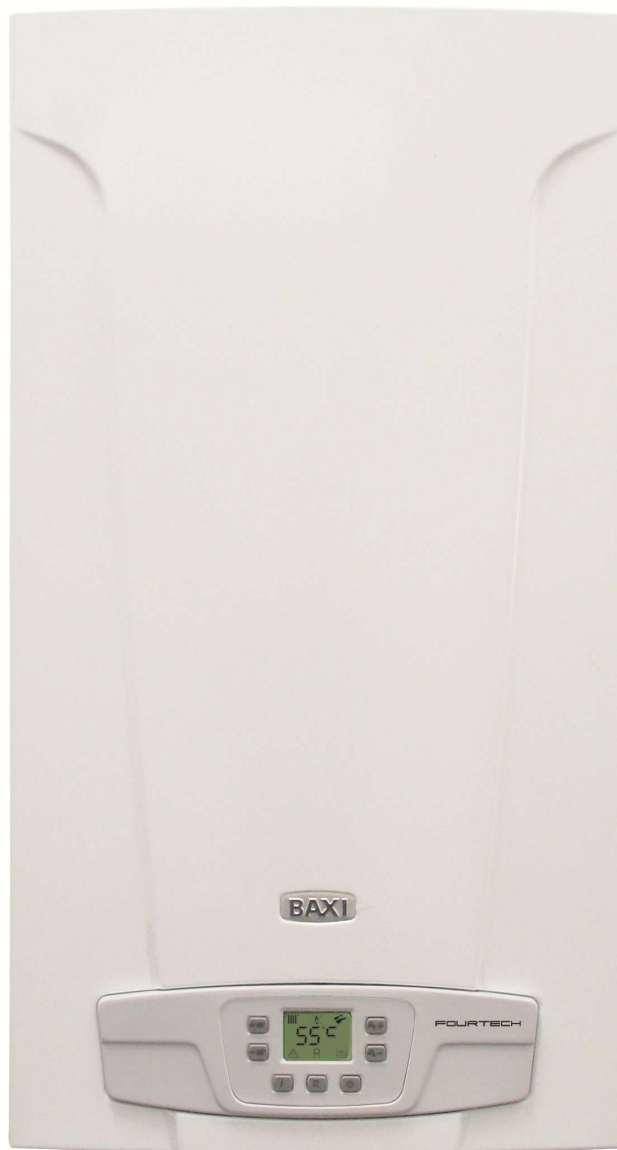


BAXI



FOURTECH

SPARE PARTS CATALOGUE

- January 2015 -

HOW TO READ THE SPARE PARTS CATALOGUE

In the spare part catalogue, after the exploded diagrams, there are the components lists of the boilers; this is the meaning of the different columns:

Pos. Identification number of the component in the exploded diagram of the boiler.

Description Short description of the component.

Code BAXI S.p.A. code of the component.

Tab. XX XX is the exploded diagram number of the boiler taken into consideration.

Until 31st December 2011

From serial number Date (year and week) identifying the beginning of production of a component (taken from the serial number of the boiler).
e.g. B005: year 2000 (B identifies the decade 2000-2009; 0 identifies the year) – 5th week.
If the box is empty, the component is in use from the beginning of production of the boiler.

To serial number Date (year and week) identifying the end of production of a component (taken from the serial number of the boiler).
e.g. B012: year 2000 (B identifies the decade 2000-2009; 0 identifies the year) – 12th week.
If the box is empty, the component is still in use.

Interchangeable It identifies the interchangeability between the new component and the old one.
YES: components are interchangeable.
NO: components are not interchangeable.

From 1st January 2012

From serial number Date (year and week) identifying the beginning of production of a component (taken from the serial number of the boiler).
e.g. 1201: year 2012 (1 identifies the decade 2010-2019; 2 identifies the year) – 01th week.
If the box is empty, the component is in use from the beginning of production of the boiler.

To serial number Date (year and week) identifying the end of production of a component (taken from the serial number of the boiler).
e.g. 1225: year 2012 (1 identifies the decade 2010-2019; 2 identifies the year) – 25th week.
If the box is empty, the component is still in use.

Interchangeable It identifies the interchangeability between the new component and the old one.
YES: components are interchangeable.
NO: components are not interchangeable.

TABELLA COLLEGAMENTO CODICE CALDAIA - ESPLOSO TABLEAU CONNECTION CODEX CHAUDIERE - VUE ECLATEE BOILERS CONNECTION BOARD - EXPLODED VIEW

BOILER CODE	BOILER DESCRIPTION	EXPLODED REF.
CODICE CALDAIA	DESCRIZIONE CALDAIA	RIF. ESPLOSO
CODIGO CALDERA	DESCRIPCION CALDERA	REF. EXPLOSIONADO
CODE CHAUDIÈRE	DESCRIPTION CHAUDIÈRE	RÉF. EXPLOSÉE
CSB461143680	FOURTECH 1.14 -BAXI-	Tab 375
CSB465143680	FOURTECH 1.14 F -BAXI-	Tab 376
CSB461243680	FOURTECH 1.24 -BAXI-	Tab 375
CSB465243680	FOURTECH 1.24 F -BAXI-	Tab 376
CSB462243680/1	FOURTECH 24 -BAXI-	Tab 366
CSB466243680/1	FOURTECH 24 F -BAXI-	Tab 365

FOURTECH

Pos	Code	Description code	CSB462243680/1						To serial number	From serial number	Interchangeable:	
			1.14	1.24	24	1.14 F	1.24 F	24 F				
2	5698660	LEFT PANEL ASSEMBLY ECO4 ATM.	•	•	•							
2	5698680	LEFT PANEL ASSEMBLY ECO4 FF				•	•	•				
3	5698650	RIGHT PANEL ASSEMBLY ECO4 ATM.	•	•	•							
3	5698670	RIGHT PANEL ASSEMBLY ECO4 FF				•	•	•				
4	628820	FRONTAL PANEL ASS. ECO4 ATM	•	•	•	•	•	•				
5	5117420	TRAVERSE SIDES CONNECTION FF				•	•	•				
5	5117460	TRAVERSE SIDES CONNECTION-ATM-	•	•	•							
8	5408080	PRESSURE SWITCH PIPE L=270				•	•	•				
9	5117740	FLUE REDUCTION d.78mm				•	•	•				
12	5108690	PLATE BLANKING				•	•	•				
13	5407400	SUCTION CAP GASKET				•	•	•				
17	5214290	BEND FLUE EMISSIONS ECO4				•	•	•				
18	5409580	PRESSURE SENSING VENTURI 80E				•						
18	5413850	PRESS.SENS.VENTURI SINGLE TAP					•	•				
21	5402050	WASHER-SEALING	•	•	•	•	•	•				
22	5678500	FAN 31W				•						
22	5682150	FAN					•	•				
23	628610	PRESS.SWITCH ASS. 0,68mbar HONEYW.					•	•		C121	YES	
23	628770	FLUE PRESS.SWITCH 70-60Pa HUBA					•	•		C120		
23	628800	FLUE PRESS.SWITCH 50-39Pa HUBA				•				1312		
23	5663820	PRESSURE SWITCH 80 ASS. IND.					•	•		C120		
23	710789900	PRESSURE SWITCH ASSEMBLY HUBA					•	•		1448	C121	YES
23	711277100	FLUE PRESS. SWITCH 50-39Pa HUBA				•				1313	YES	
23	721890300	FLUE PRESS.SWITCH 70-60Pa HUBA					•	•		1449	YES	
24	5407930	PIPE - VALVE COMPENSATION				•	•	•		B923		
24	5414320	PIPE-VALVE COMPENS.4,5x8 L=170				•	•	•		B924	YES	
25	5113800	CONVEYOR ASSEMBLY				•	•	•				
27	5698630	COMBUST. CHAMBER ASS. ECO4 ATM		•	•							
27	5698640	COMBUST. CHAMBER ASS. ECO4 FF				•	•	•				
27	5699130	COMB.CHAMBER ASS.ECO4 ATM 14KW	•									
28	5213210	INSULATING PANEL				•	•	•				
28	5213220	INSULATING PANEL	•	•	•							
29	5213280	INSULATING PANEL	•	•	•	•	•	•		B506	YES	
30	5213370	INSULATING PANEL				•	•	•				
30	5213380	FRONTAL INSULATING PANEL	•	•	•							
31	612970	COMB. CHAMBER FRONTAL PANEL				•	•	•				
31	615370	COMBUST.CHAMBER FRONTAL PANEL	•	•	•							
32	5677660	PRIMARY EXCHANGER WITH CLIPS	•	•	•	•	•	•				
33	5403130	O-RING 22 x 3	•	•	•	•	•	•		1311		
33	710963000	OR 21,5X3 EP70 TFL	•	•	•	•	•	•		1312	YES	
34	5113650	PRIMARY EXCHANGER FIXING CLIP	•	•	•	•	•	•				
35	5693900	RECT.EXPANSION VESSEL 6I-CIMM-	•	•	•							

FOURTECH

Pos	Code	Description code							To serial number	From serial number	Intercha ngeable:
			CSB461143680 1,14	CSB461243680 1,24	CSB462243680/1 24	CSB465143680 1,14 F	CSB465243680 1,24 F	CSB466243680/1 24 F			
35	5693920	CIRC.EXPANS.VESSEL 6I CIMM				•	•	•		C013	YES
35	5695230	CIRC.EXPANS.VESSEL 6I ZILMET				•	•	•		C012	
36	5698830	PIPE EXPANSION VESSEL	•	•	•	•	•	•			
37	5663830	SEALED CHAMBER FRONT PANEL				•	•	•			
38	5401610	VIEWING WINDOW GASKET				•	•	•			
39	5203930	VIEWING WINDOW				•	•	•			
40	5103360	SURROUND - VIEWING WINDOW				•	•	•			
41	5663710	BURNER ASSEMBLY (13 ELEM.)		•	•		•	•			
41	5665980	BURNER ASSEMBLY PERFORMA 12e	•			•					
43	5665960	GAS RAMP 10 HOLES d.1,18	•			•					
43	5698690	GAS RAMP 13HOLES/INJECT. d1,18		•	•						
43	5698700	GAS RAMP 13HOLES/INJECT. d1,28					•	•			
44	5666400	NATURAL GAS INJECTORS KIT				•	•	•			
44	5669460	NATURAL GAS INJECTORS KIT	•	•	•						
44	5680020	TRANSFORMATION KIT G31	•	•	•	•	•	•			
45	5407940	GASKET-BURNER MANIFOLD	•	•	•	•	•	•			
46	5657180	ADAPTOR-MANIFOLD	•	•	•	•	•	•			
47	5407810	GASKET-MANIFOLD ADAPTOR				•	•	•			
49	5409520	HOSE ADAPTER CAP				•	•	•			
59	8612400	IGNITION CABLE L=250 ECO4	•	•	•	•	•	•		C023	
59	710430800	IGNITION CABLE L=250 RESIST.	•	•	•	•	•	•		C024	
61	5407830	INSULATION BOOT - ELECTRODE	•	•	•	•	•	•			
62	5409570	SEALED CHAMBER HOSE ADAPTER				•	•	•			
63	8422570	ELECTRODE - IGNITION	•	•	•	•	•	•			
70	5698720	PIPE PUMP/EXCHANGER ATM BITRON	•	•	•						
70	5698730	PIPE PUMP/EXCHANGER FF BITRON				•	•	•			
72	5698260	PUMP ONE SPEED 5meters WILO	•	•	•	•	•	•			
73	710139500	AUTOMATIC AIR VENT WI	•	•	•	•	•	•			
75	5404670	GROMMET - PIPE ASSEMBLY				•	•	•			
76	5686660	DHW PLATE EXCHANGER 10 PLATES			•			•			
77	5404520	DHW PLATE EXCHANGER GASKET			•			•			
80	711033700	COMBI HYDROBLOCK RETURN BIT. ECO			•			•			
81	710048100	DHW CARTRIDGE			•			•			
90	710046600	FILLING TAP ASSY	•	•	•	•	•	•			
91	710045500	DISCHARGE TAP CONNECTION	•	•	•	•	•	•			
92	710071200	SAFETY VALVE 3 bar NOVASFER	•	•	•	•	•	•			
98	710046300	BY-PASS CONNECTION ASSY	•	•	•	•	•	•			
102	711033600	COMBI HYDROBLOCK DELIVERY BIT. EC			•			•			
113	710048300	BY-PASS CARTRIDGE	•	•	•	•	•	•			
114	710046400	O-RING d.15,54X2,62	•	•	•	•	•	•			
120	710144100	3WV CARTRIDGE			•			•		1448	
120	721403800	3WV CARTRIDGE			•			•		1449	YES
122	710047800	O-RING d.23,47X2,62			•			•			
128	710048800	O-RING d.8,9X1,9	•	•	•	•	•	•			

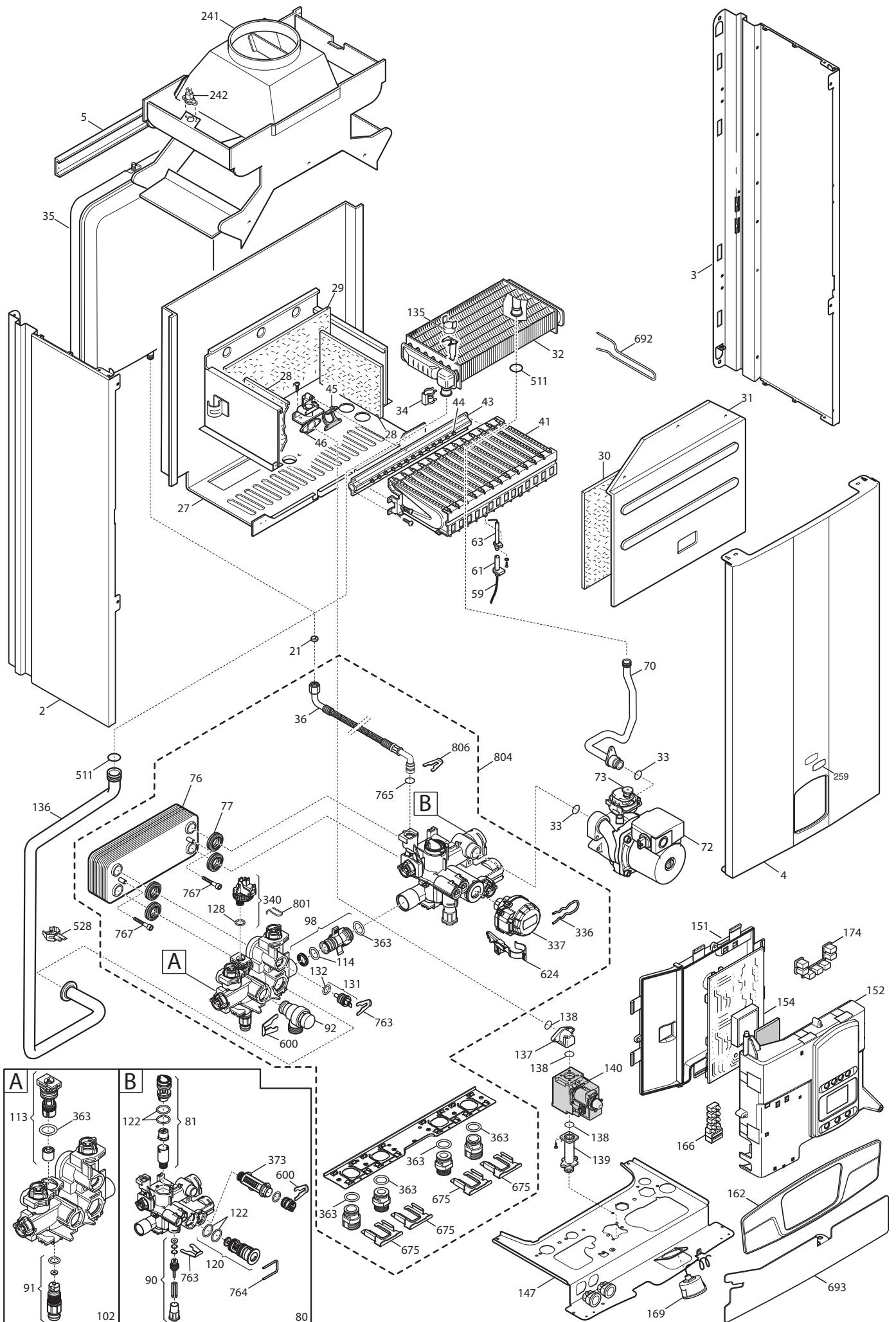
FOURTECH

Pos	Code	Description code	CSB461143680 1.14	CSB461243680 1.24	CSB462243680/1 24	CSB465143680 1.14 F	CSB465243680 1.24 F	CSB466243680/1 24 F	To serial number	From serial number	Intercha ngeable:
131	710056200	NTC SENSOR HONEYWELL			•			•	1422		
131	721309400	NTC SENSOR NICKEL			•			•		1423	YES
132	710049100	O-RING d.11,91X2,62 OR115			•			•			
135	9951610	LIMIT THERMOSTAT 105°C	•	•	•	•	•	•			
136	5698740	PIPE EXCH./H.INLET ECO4 ATM	•	•	•						
136	5698750	PIPE EXCHANGER/H.INLET ECO4 FF				•	•	•			
137	5214270	GAS V. ELBOW OUTLET OPEN FLUE	•	•	•						
137	5214280	GAS VALVE ELBOW OUTLET FF				•	•	•			
138	5402010	O RING 22.22x2.62	•	•	•	•	•	•			
139	5206620	CONNECTOR-GAS VALVE INLET	•	•	•	•	•	•			
140	5653610	GAS VALVE - SIGMA 845048	•	•	•	•	•	•			
140	5665220	GAS VALVE HON.	•	•	•	•	•	•			
147	5698770	CONNECTION TRAVERSE ECO4	•	•	•	•	•	•			
151	631660	CONTROL PANEL ECO4	•	•	•	•	•			1224	
151	5413650	CONTROL PANEL COVER ECO4	•	•	•	•	•	•	1223		
152	5698880	CONTROL PANEL ECO4 BAXI	•	•	•	•	•	•			
154	5702450	PCB GROUP BERT&PART HDIMS 02	•	•	•	•	•	•			
154	710825300	PCB SM11469	•	•	•	•	•	•			
162	5698910	PANEL PLATE ECO4 BAXI	•	•	•	•	•	•			
166	5688430	TERM.BOARD/DOUBLE FUSE HOLDER	•	•	•	•	•	•			
169	8922460	MANOMETER d.40 XGR. BITRON	•	•	•	•	•	•			
174	5414010	KEYBOARD ECO4 BAXI	•	•	•	•	•	•			
231	5409480	FLUE INTAKE				•	•	•			
241	5668420	CONVEYOR ASSEMBLY		•	•						
241	5678060	FLUE CHAMBER ASSEMBLY 14KW	•								
242	606930	FLUE SAFETY THERMOSTAT 60C	•								
242	616160	FLUE SAFETY THERMOSTAT 70ø		•	•						
259	5681120	BRAND BAXI LUNA3	•	•	•	•	•	•			
305	5113810	EVACUATION SMOKE CHIMNEY				•	•	•			
336	710047400	CLIP - 3WV MOTOR HEAD			•			•			
337	710047300	3WV MOTOR HEAD			•			•			
340	710048500	ON/OFF CH PRESSURE SWITCH	•	•	•	•	•	•	1448		
340	721384000	ON/OFF CH PRESSURE SWITCH	•	•	•	•	•	•		1449	YES
363	710045300	O-RING d.17,96X2,62	•	•	•	•	•	•			
373	710047100	CH FILTER	•	•	•	•	•	•			
425	5412270	GASKET FAN HT				•	•	•			
511	5404600	O.R. 17,86x2,62	•	•	•	•	•	•			
528	8435500	NTC SENSOR D18-ITS2410201/0-	•	•	•	•	•	•			
600	710045400	CLIP FLAT d.18	•	•	•	•	•	•			
624	710046200	HALL SENSOR ASSY			•			•	1219		
624	710976600	HALL SENSOR ASSY			•			•		1220	YES
675	710046100	CLIP BRASS ADAPTOR	•	•	•	•	•	•			
692	5114360	PRIMARY EXCHANGER CLIPS	•	•	•	•	•	•			
693	5117440	PRINTED CNTR. PANEL PROTECTION	•	•	•	•	•	•			

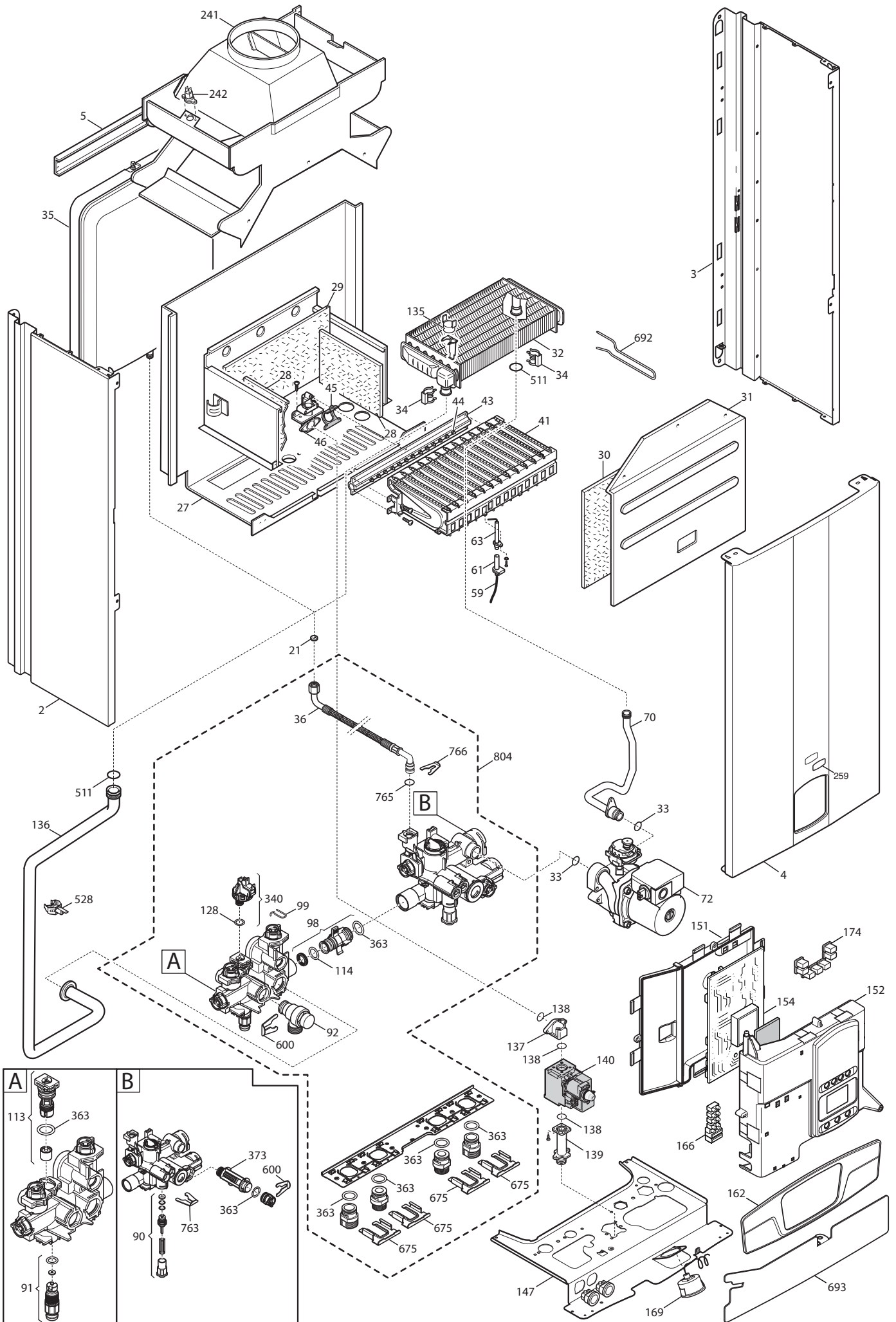
FOURTECH

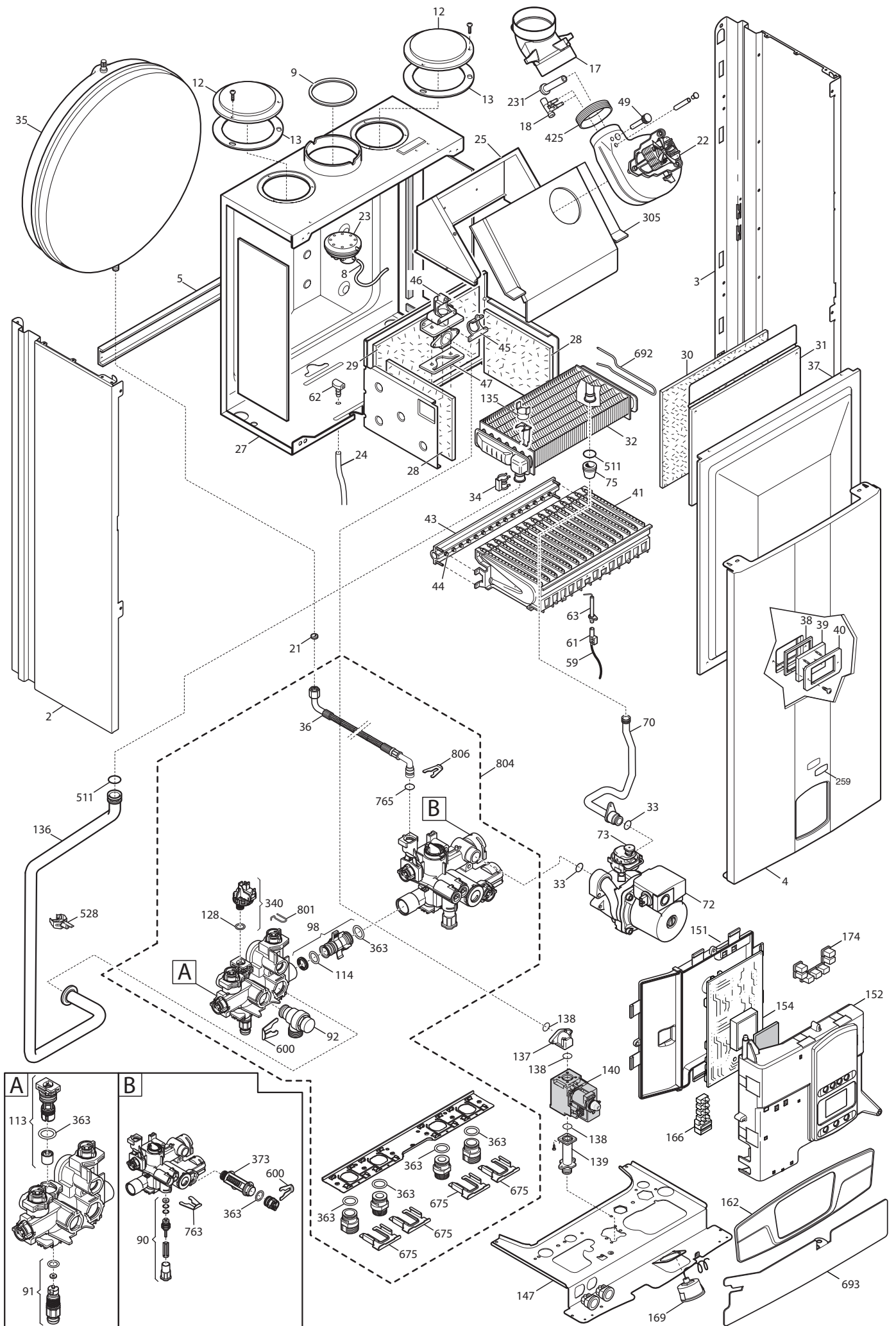
Pos	Code	Description code							To serial number	From serial number	Interchangeable:
			CSB461143680 1.14	CSB461243680 1.24	CSB462243680/1 24	CSB465143680 1.14 F	CSB465243680 1.24 F	CSB466243680/1 24 F			
763	710046700	CLIP FLAT d.12	•	•	•	•	•	•			
764	710047500	CLIP U d.3			•			•			
765	710045700	O-RING d.9,19 X 2,62	•	•	•	•	•	•		1314	YES
765	710069700	O-RING 9,19X2,62 EPDM	•	•	•	•	•	•		1313	
767	710046900	PTP EXCH FIXING SCREW			•			•			
801	710048700	CLIP CH PRESSURE SWITCH	•	•	•	•	•	•			
804	5698760	HYDRAULIC GROUP COMBI BITRON			•			•			
804	5699200	HYDRAULIC GROUP ONLY HEATING	•	•		•	•				
806	5117880	CLIP d.10 BITRON	•	•	•	•	•	•			
999	8414540	CABLE ROOM TH	•	•	•	•	•	•			
999	8414620	POWER CABLE	•	•	•	•	•	•			
999	8419040	CABLE - EARTH	•	•	•	•	•	•			
999	8513650	LOW VOLTAGE WIRING ECO4 ATM	•	•	•						
999	8513660	FAN WIRING ECO4				•	•	•			
999	8513670	LOW VOLTAGE WIRING ECO4 FF				•	•	•			
999	8513890	HIGH VOLTAGE WIRING ECO4 SIT			•			•			
999	8513900	HIGH VOLTAGE WIRING ECO4 HON.			•			•			
999	8513910	LOW VOLTAGE WIRING ECO4 BITRON			•			•			
999	8513930	HIGH VOLT.WIRING ECO4 SIT MON.	•	•		•	•				
999	8513940	HIGH VOLT.WIRING ECO4 HON.	•	•		•	•				
999	8513950	LOW VOLT.WIRING ECO4 MONOTHER.	•	•		•	•				

Tab 366



Tab 375





BAXI

BAXI S.p.A.
Via Trozzetti, 20
36061 BASSANO DEL GRAPPA (VI)
ITALY
Tel. +390424517111
Telefax +390424517379
E-mail. service@baxi.it