

# BAXI



**MAIN**

**SPARE PARTS CATALOGUE**

**- January 2015 -**



# HOW TO READ THE SPARE PARTS CATALOGUE

In the spare part catalogue, after the exploded diagrams, there are the components lists of the boilers; this is the meaning of the different columns:

Pos. Identification number of the component in the exploded diagram of the boiler.

Description Short description of the component.

Code BAXI S.p.A. code of the component.

Tab. XX XX is the exploded diagram number of the boiler taken into consideration.

## Until 31st December 2011

From serial number Date (year and week) identifying the beginning of production of a component (taken from the serial number of the boiler).

e.g. B005: year 2000 (B identifies the decade 2000-2009; 0 identifies the year) – 5th week.

If the box is empty, the component is in use from the beginning of production of the boiler.

To serial number Date (year and week) identifying the end of production of a component (taken from the serial number of the boiler).

e.g. B012: year 2000 (B identifies the decade 2000-2009; 0 identifies the year) – 12th week.

If the box is empty, the component is still in use.

Interchangeable It identifies the interchangeability between the new component and the old one.

YES: components are interchangeable.

NO: components are not interchangeable

## From the 1st January 2012

From serial number Date (year and week) identifying the beginning of production of a component (taken from the serial number of the boiler).

e.g. 1205: year 2012 (1 identifies the decade 2010-2019; 2 identifies the year) – 5th week.

If the box is empty, the component is in use from the beginning of production of the boiler.

To serial number Date (year and week) identifying the end of production of a component (taken from the serial number of the boiler).

e.g. 1235: year 2012 (1 identifies the decade 2010-2019; 2 identifies the year) – 35th week.

If the box is empty, the component is still in use.

Interchangeable It identifies the interchangeability between the new component and the old one.

YES: components are interchangeable.

NO: components are not interchangeable.

## TABELLA COLLEGAMENTO CODICE CALDAIA - ESPLOSO TABLEAU CONNECTION CODEX CHAUDIERE - VUE ECLATEE BOILERS CONNECTION BOARD - EXPLODED VIEW

<b>BOILER CODE</b>	<b>BOILER DESCRIPTION</b>	<b>EXPLODED REF.</b>
<b>CODICE CALDAIA</b>	<b>DESCRIZIONE CALDAIA</b>	<b>RIF. ESPLOSO</b>
<b>CODIGO CALDERA</b>	<b>DESCRIPCION CALDERA</b>	<b>REF. EXPLOSIONADO</b>
<b>CODE CHAUDIÈRE</b>	<b>DESCRIPTION CHAUDIÈRE</b>	<b>RÉF. EXPLOSÉE</b>
BSA436183411	MAIN 18 FI	Tab 4
BSA436183410	MAIN 18 FI	Tab 3
BSB436243652	MAIN 24 FI	Tab 4
BSB436243651	MAIN 24 FI	Tab 3
BSB436243650	MAIN 24 FI	Tab 3
BSB432243651	MAIN 24 i	Tab 5
BSB432243650	MAIN 24 i	Tab 5



Pos	Code	Description code	BSA436183410 MAIN 18 Ft	BSA436183411 MAIN 18 Ft	MAIN 24 METANO BSB432243650	MAIN 24 METANO BSB432243651	MAIN 24 Ft BSB436243650	MAIN 24 Ft BSB436243651	To serial number	From serial number	Intercha ngeable:
30	5213370	INSULATING PANEL	•	•			•	•		B506	YES
30	5213380	FRONTAL INSULATING PANEL			•	•				B506	YES
31	5113820	COMB. CHAMBER FRONT PANEL	•	•			•	•			
31	5114290	COMB. CHAMBER FRONTAL PANEL			•	•					
32	616170	BI-THERMAL HEAT EXCHANGER+ OR				•				B403	
32	616170	BI-THERMAL HEAT EXCHANGER+ OR	•	•	•		•	•		B403	YES
32	5663720	BI-THERMAL HEAT EXCHANGER	•	•	•	•	•	•	B402		
33	5403130	O-RING 22 x 3	•	•	•	•	•	•	1311		
33	710963000	OR 21,5X3 EP70 TFL	•	•	•	•	•	•		1312	YES
34	5113650	PRIMARY EXCHANGER FIXING CLIP	•	•	•	•	•	•			
35	5663880	EXPANSION VESSEL	•	•			•	•			
35	5668370	EXPANSION VESSEL 7 L			•	•					
37	5663830	SEALED CHAMBER FRONT PANEL	•	•			•	•			
38	5401610	VIEWING WINDOW GASKET	•	•			•	•			
39	5203930	VIEWING WINDOW	•	•			•	•			
40	5103360	SURROUND - VIEWING WINDOW	•	•			•	•			
41	5663710	BURNER ASSEMBLY (13 ELEM.)	•	•	•	•	•	•			
43	612960	GAS RAMP WITH INJECTORS (N.G.					•	•			
43	615260	GAS RAMP WITH INJECTORS	•	•	•	•					
44	5666390	L.P.G. INJECTORS KIT	•	•	•	•	•	•			
44	5666400	NATURAL GAS INJECTORS KIT					•	•			
44	5669460	NATURAL GAS INJECTORS KIT	•	•	•	•					
45	5407940	GASKET-BURNER MANIFOLD	•	•	•	•	•	•			
46	607990	ASSEMBLY-GAS CONNECTION/GASKET	•	•	•	•	•	•			
47	5404760	GASKET-GAS RAMP/SEALED CHAMB.	•	•			•	•			
49	5409520	HOSE ADAPTER CAP	•	•			•	•			
59	8419050	LEAD - IGNITION ELECTRODE	•	•	•	•	•	•			
61	5407830	INSULATION BOOT - ELECTRODE	•	•	•	•	•	•			
62	5409570	SEALED CHAMBER HOSE ADAPTER	•				•	•			
63	8422570	ELECTRODE - IGNITION	•	•	•	•	•	•			
70	5663730	EXCHANGER/PUMP PIPE ASSEMBLY	•	•			•	•			
70	5668320	PIPE ASSEMBLY			•	•					
72	5655200	PUMP UP 15.50 AO - GRUNDFOS	•	•	•	•	•	•			
73	607290	AUTOMATIC AIR VENT	•	•	•	•	•	•			
74	5406360	O-RING 14X1,78 EP	•	•	•	•	•	•			
80	5212240	HYDRAULIC INLET GROUP	•	•	•	•	•	•			
90	5663780	FILLING TAP					•		B323		NOTE A
90	5667980	FILLING TAP	•	•						B323	NO
90	5667980	FILLING TAP			•	•	•	•			
91	5652030	DRAINING TAP	•	•	•	•	•	•			
92	9951170	SAFETY VALVE 3 BAR	•	•	•	•	•	•			
131	8434820	TEMPERATURE SENSOR	•	•	•	•	•	•			

# MAIN

14/01/2015

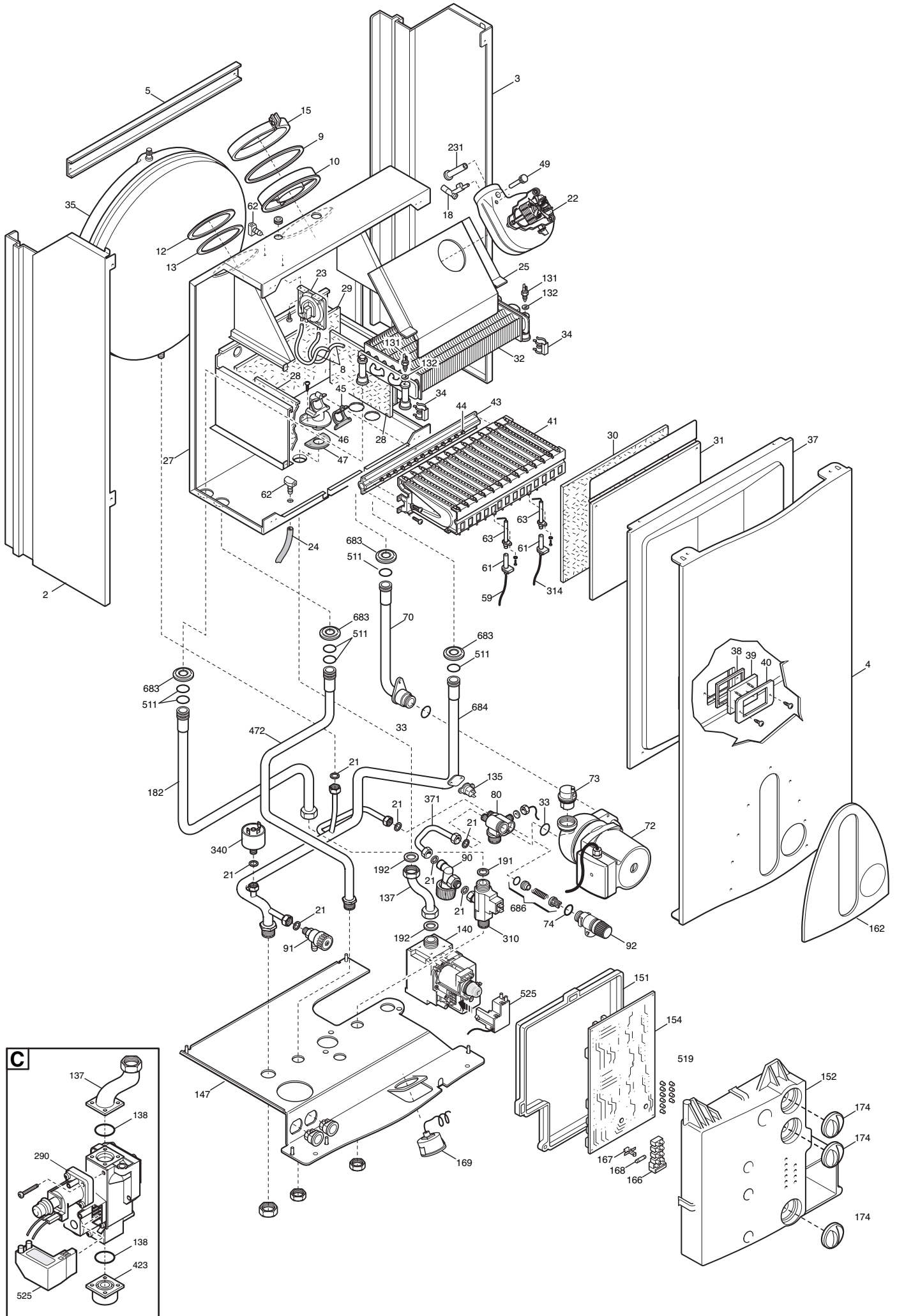
Pos	Code	Description code	BSA436183410 MAIN 18 FI	BSA436183411 MAIN 18 FI	MAIN 24 METANO	BSB432243650 MAIN 24 METANO	BSB432243651 MAIN 24 FI	BSB436243650 MAIN 24 FI	BSB436243651 MAIN 24 FI	To serial number	From serial number	Intercha ngeable:
132	5402830	WASHER - SENSOR SEALING	•	•	•	•	•	•	•			
135	9950760	THERMOSTAT - LIMIT	•	•	•	•	•	•	•			
137	5663690	GAS PIPE					•					
137	5668360	GAS PIPE			•							
137	5669650	GAS PIPE HON. MAIN FF	•	•				•	•			
137	5670420	GAS PIPE HON. MAIN ATM				•						
138	5402010	O RING 22.22x2.62	•	•	•	•		•	•			
140	5658830	GAS VALVE - SIGMA	•	•	•	•	•	•	•			
140	5665220	GAS VALVE HON.	•	•	•	•	•	•	•			
147	5668500	CONNECTION TRAVERSE	•	•	•	•	•	•	•			
151	5409550	ELECTRIC BOX REAR COVER	•	•	•	•	•	•	•			
152	5663890	P.CONTROL PANEL MAIN 24 FI			•	•					B731	YES
152	5663890	P.CONTROL PANEL MAIN 24 FI	•	•				•	•			
152	5668390	PRINTED CONTROL PANEL			•	•				B730		
154	5663840	P.C.B. - SIT					•			B323		
154	5668020	PCB COMBI BOILER SIT ATM.	•	•						B523		
154	5668020	PCB COMBI BOILER SIT ATM.			•	•	•	•	•	B523	B323	YES
154	5669660	P.C.B. HONEYWELL	•	•						B722		
154	5669660	P.C.B. HONEYWELL			•	•	•	•	•	B722	B406	YES
154	5685480	PCB HONEYWELL STEP MOT	•	•	•	•	•	•	•		B723	YES
162	5665020	PANEL PLATE MAIN						•	•			
162	5668410	PANEL PLATE 24 I BAXI			•	•						
162	5670840	PANEL PLATE	•	•								
166	8421590	TERMINAL BLOCK	•	•	•	•	•	•	•			
167	5405340	FUSE HOLDER	•	•	•	•	•	•	•			
168	9950580	FUSE	•	•	•	•	•	•	•			
169	9951330	MANOMETER D.40	•	•	•	•	•	•	•	B733		
169	9951650	MANOMETER D.40	•	•	•	•	•	•	•		B734	YES
174	5409540	KNOB	•	•	•	•	•	•	•			
182	5663800	COLD WATER PIPE ASSEMBLY	•	•				•	•	B646		
182	5668330	COLD WATER PIPE ASSEMBLY	•	•				•	•		B647	
182	5668330	COLD WATER PIPE ASSEMBLY			•	•						
191	5408970	WASHER - SEALING G1/2	•	•	•	•	•	•	•			
192	5404650	SEALING WASHER G 3/4	•	•	•	•	•	•	•			
231	5409480	FLUE INTAKE	•	•				•	•			
241	5668420	CONVEYOR ASSEMBLY			•	•						
242	600870	FLUE SAFETY THERMOSTAT 70C			•	•						
290	5665230	MODULATION COIL ASSY	•	•	•	•	•	•	•			
310	5663770	DHW FLOW SWITCH (BITRON)	•	•	•	•	•	•	•			
314	8418870	LEAD - SENSING ELECTRODE	•	•	•	•	•	•	•			
340	5663750	PRESSURE SWITCH	•	•	•	•	•	•	•	B714		
340	9951690	PRESSURE SWITCH	•	•	•	•	•	•	•		B715	YES

# MAIN

14/01/2015

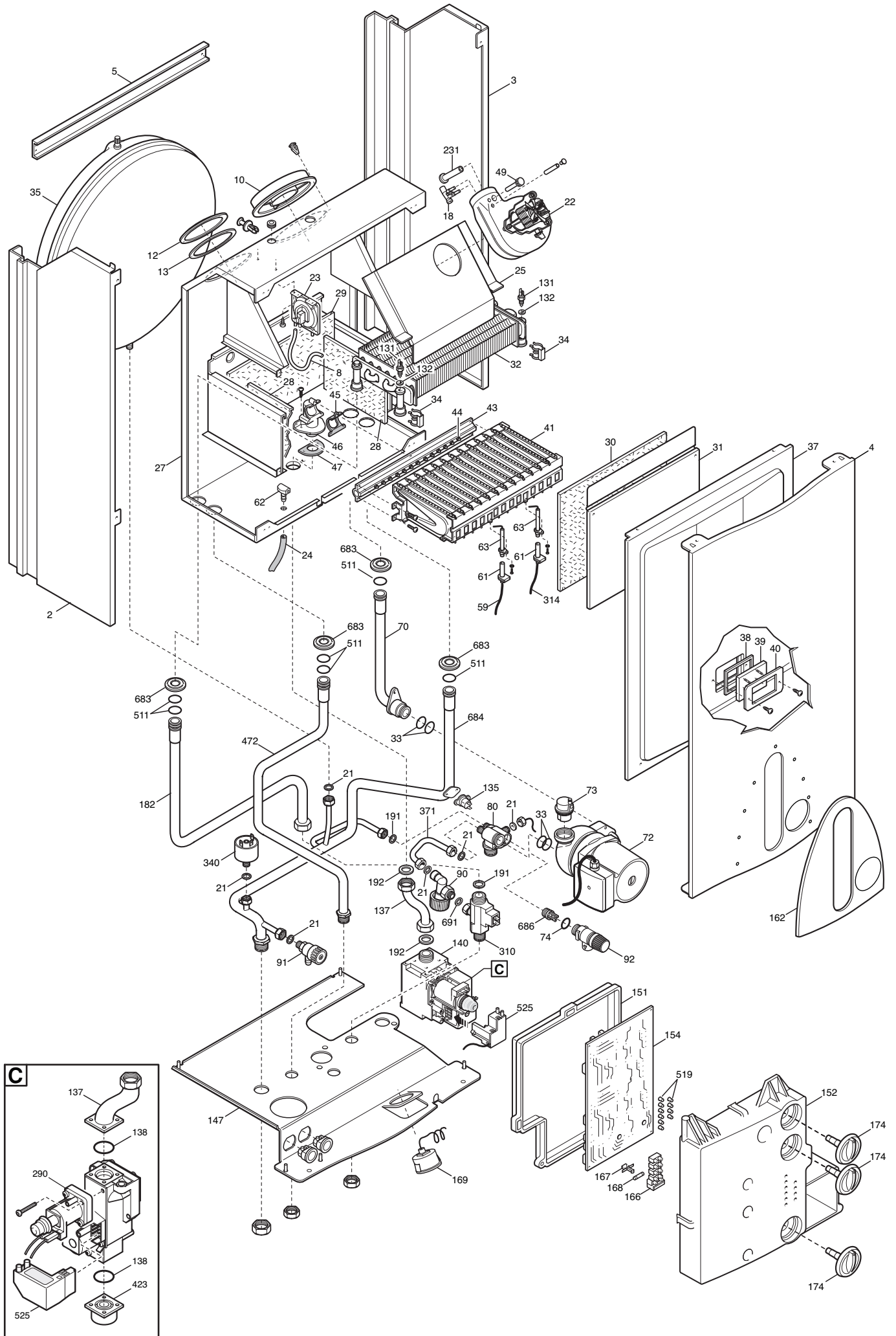
Pos	Code	Description code								To serial number	From serial number	Interchangeable:	
			BSA436183410 MAIN 18 Ft	BSA436183411 MAIN 18 Ft	MAIN 24 METANO	BSB432243650 MAIN 24 METANO	BSB432243651 MAIN 24 Ft	BSB436243650 MAIN 24 Ft	BSB436243651 MAIN 24 Ft				
371	5663790	DRAINING PIPE									B323		
371	5667990	DRAINING PIPE	•	•	•	•		•	•				
371	5667990	DRAINING PIPE						•				B323	NO
423	5210410	GAS VALVE CONNECTOR	•	•	•	•	•	•	•				
472	5663760	DHW OUTLET PIPE	•	•				•	•	•			
472	5668350	DHW OUTLET PIPE				•	•						
511	5404600	O.R. 17,86x2,62	•	•	•	•	•	•	•	•			
519	5407780	LENS - NEON	•	•	•	•	•	•	•	•			
525	8419060	IGNITION UNIT - NAC	•	•	•	•	•	•	•	•			
525	8510910	CABLE-GAS VALVE/IGNITER	•	•	•	•	•	•	•	•			
525	8511560	SAC IGNITOR L 600	•	•	•	•	•	•	•	•			
626	5114370	FLUE SAFETY THERMOSTAT CLIP				•	•						
683	5408810	GASKET GAS RAMP	•	•				•	•	•			
684	5663740	BY-PASS/HETING INLET/EXCHAN.PIPE	•	•				•	•	•			
684	5668340	BY PASS-HEATING EXCHANGER PIPE				•	•						
686	5663020	BY-PASS PLUG ASSEMBLY	•	•	•	•	•	•	•	•			
691	5410320	GASKET 9X4X3	•	•	•	•	•	•	•	•			
692	5114360	PRIMARY EXCHANGER CLIPS				•	•						
693	5114350	PRINTED CNTR. PANEL PROTECTION				•	•						
999	8414620	POWER CABLE	•	•	•	•	•	•	•	•			
999	8510340	POWER SUPPLY WIRING	•	•				•	•	•			
999	8510350	LOW VOLTAGE COMP.WIRING	•	•				•	•	•			
999	8510740	POWER SUPPLY WIRING				•	•						
999	8510750	LOW VOLTAGE COMP.WIRING				•	•						
999	8510760	POWER SUPPLY WIRING				•	•						
999	8512470	EARTH WIRING ECO3 90°	•	•	•	•	•	•	•	•			

# Tab 3





# Tab 4







**BAXI**

**BAXI S.p.A.**  
**Via Trozzetti, 20**  
**36061 BASSANO DEL GRAPPA (VI)**  
**ITALY**  
**Tel. +390424517111**  
**Telefax +390424517379**  
**E-mail. [service@baxi.it](mailto:service@baxi.it)**