

BAXI



ECOFOUR

SPARE PARTS CATALOGUE

- June 2017 -

HOW TO READ THE SPARE PARTS CATALOGUE

In the spare part catalogue, after the exploded diagrams, there are the components lists of the boilers; this is the meaning of the different columns:

Pos.	Identification number of the component in the exploded diagram of the boiler.
Description	Short description of the component.
Code	BAXI S.p.A. code of the component.
Tab. XX	XX is the exploded diagram number of the boiler taken into consideration.

From serial number Date (year and week) identifying the beginning of production of a component (taken from the serial number of the boiler).
e.g. 1205: year 2012 (1 identifies the decade 2010-2019; 2 identifies the year) – 5th week.
If the box is empty, the component is in use from the beginning of production of the boiler.

To serial number Date (year and week) identifying the end of production of a component (taken from the serial number of the boiler).
e.g. 1235: year 2012 (1 identifies the decade 2010-2019; 2 identifies the year) – 35th week.
If the box is empty, the component is still in use.

Interchangeable It identifies the interchangeability between the new component and the old one.
YES: components are interchangeable.
NO: components are not interchangeable.

TABELLA COLLEGAMENTO CODICE CALDAIA - ESPLOSO TABLEAU CONNECTION CODEX CHAUDIERE - VUE ECLATEE BOILERS CONNECTION BOARD - EXPLODED VIEW

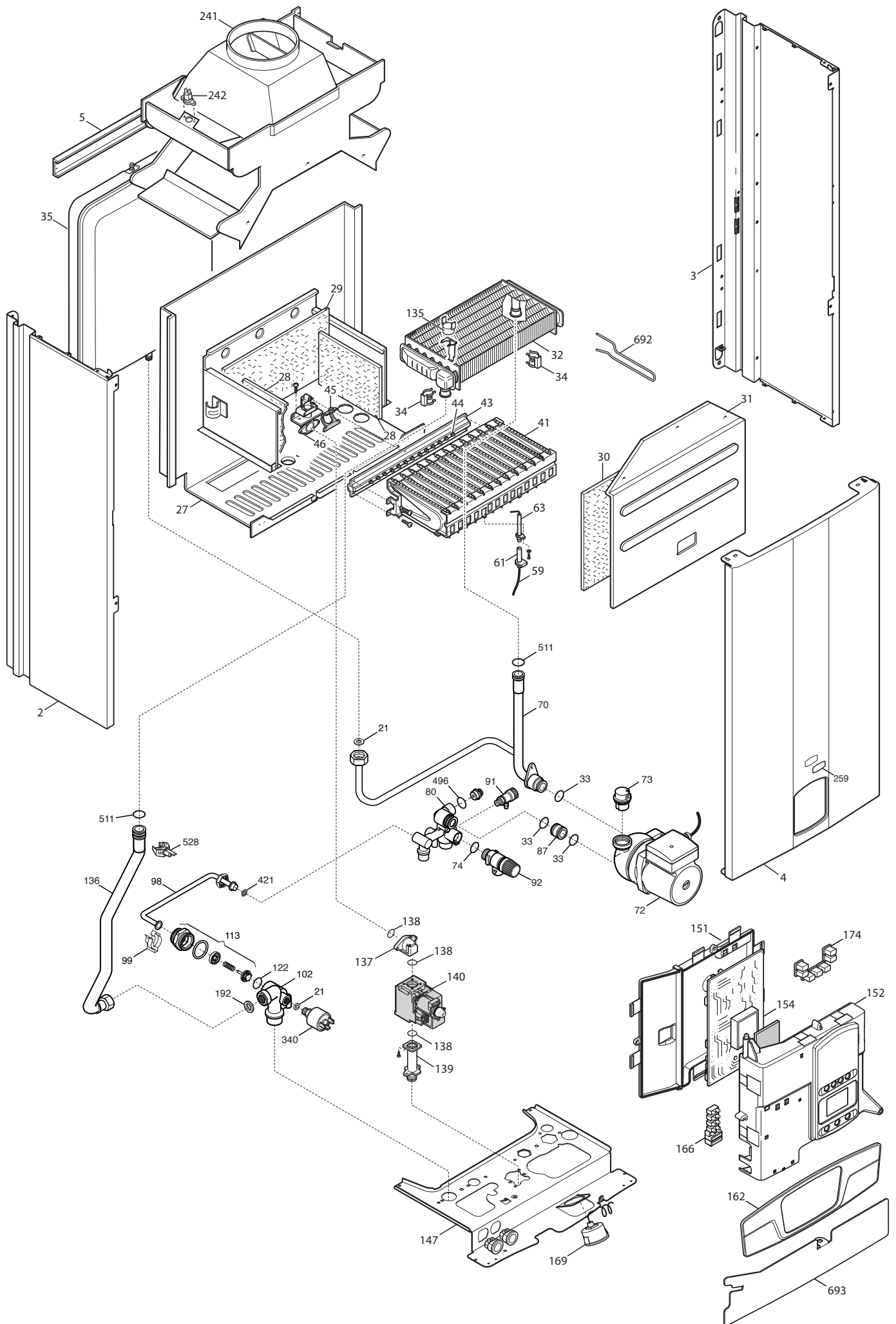
BOILER CODE	BOILER DESCRIPTION	EXPLODED REF.
CODICE CALDAIA	DESCRIZIONE CALDAIA	RIF. ESPLOSO
CODIGO CALDERA	DESCRIPCION CALDERA	REF. EXPLOSIONADO
CODE CHAUDIÈRE	DESCRIPTION CHAUDIÈRE	RÉF. EXPLOSÉE
CSE461143541/2	ECOFOUR 1.14	Tab 382
CSE465143542/3	ECOFOUR 1.14 F	Tab 433
CSE461243541/2/3	ECOFOUR 1.24	Tab 382
CSE465243542/3/4	ECOFOUR 1.24 F	Tab 433
CSE462243542/3/4	ECOFOUR 24	Tab 383
CSE466243543/4/5	ECOFOUR 24 F	Tab 434

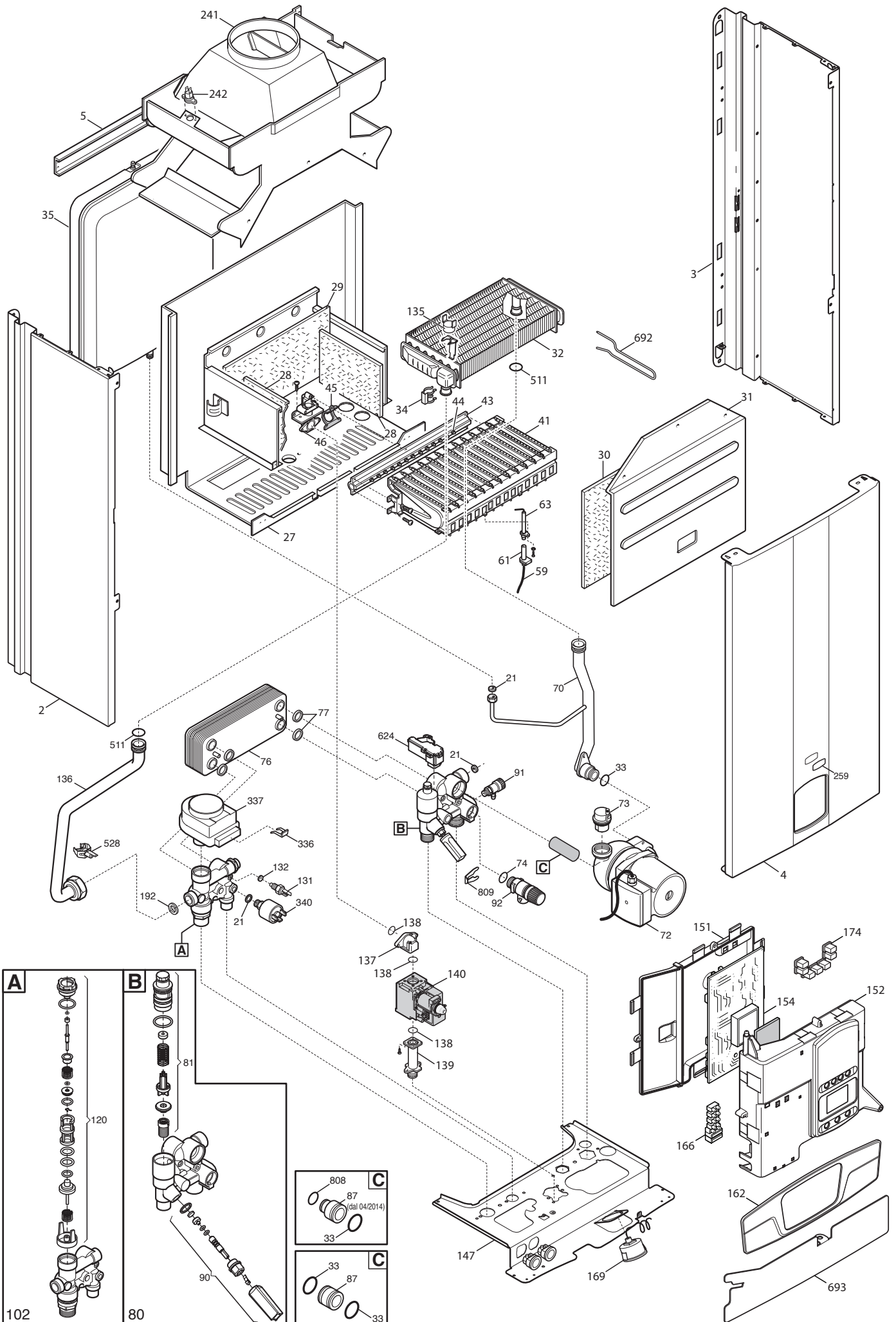
Pos	Code	Description code	CSE#						To serial number	From serial number	Intercha ngeable:
			1.14	1.14F	1.24	1.24F	24	24F			
2	5698660	LEFT PANEL ASSEMBLY ECO4 ATM.	•		•		•				
2	5698680	LEFT PANEL ASSEMBLY ECO4 FF		•		•		•			
3	5698650	RIGHT PANEL ASSEMBLY ECO4 ATM.	•		•		•				
3	5698670	RIGHT PANEL ASSEMBLY ECO4 FF		•		•		•			
4	628820	FRONTAL PANEL ASS. ECO4 ATM	•	•	•	•	•	•			
5	5117420	TRAVERSE SIDES CONNECTION FF		•		•		•			
5	5117460	TRAVERSE SIDES CONNECTION-ATM-	•		•		•				
8	5408080	PRESSURE SWITCH PIPE L=270		•		•		•			
9	5117740	FLUE RESTRICTOR D.78		•		•		•			
12	5108690	PLATE BLANKING		•		•		•			
13	5407400	SUCTION CAP GASKET		•		•		•			
17	5214290	BEND FLUE EMISSIONS ECO4		•		•		•			
18	5413850	PRESS.SENS.VENTURI SINGLE TAP				•		•			
18	710364700	PRESSURE SENSING VENTURI		•							
21	5402050	WASHER-SEALING	•	•	•	•	•	•			
22	5678500	FAN 31W		•							
22	5682150	FAN				•		•			
23	628610	PRESS.SWITCH ASS. 0,68mbar HONEYW				•		•			
23	628630	PRESS.SWITCH ASS. 0.4mbar HONEYW.		•							
23	711277100	FLUE PRESS. SWITCH 50-39Pa HUBA		•							
23	721890300	FLUE PRESS.SWITCH 70-60Pa HUBA				•		•			
24	5414320	PIPE-VALVE COMPENS.4,5x8 L=170		•		•		•			
25	5113800	CONVEYOR ASSEMBLY		•		•		•			
27	5677210	COMBUSTION CHAMBER ASSEMBLY			•		•				
27	5677940	COMBUSTION CHAMBER ASS. 14KW	•								
27	5700020	COMB.CHAMBER ASS.ECO4 FF		•		•		•			
28	5213210	INSULATING PANEL		•		•		•			
28	5213220	INSULATING PANEL	•		•		•				
29	5213280	INSULATING PANEL	•	•	•	•	•	•			
30	5213370	INSULATING PANEL		•		•		•			
30	5213380	FRONTAL INSULATING PANEL	•		•		•				
31	612970	COMB. CHAMBER FRONTAL PANEL		•		•		•			
31	615370	COMBUST.CHAMBER FRONTAL PANEL	•		•		•				
32	5677660	PRIMARY EXCHANGER WITH CLIPS	•	•	•	•	•	•			
33	710963000	OR 21,5X3 EP70 TFL	•	•	•	•	•	•			
34	5113650	PRIMARY EXCHANGER FIXING CLIP	•	•	•	•	•	•			
35	5693900	RECT.EXPANSION VESSEL 6I-CIMM-	•		•		•				
35	5693920	CIRC.EXPANS.VESSEL 6I CIMM		•		•		•			

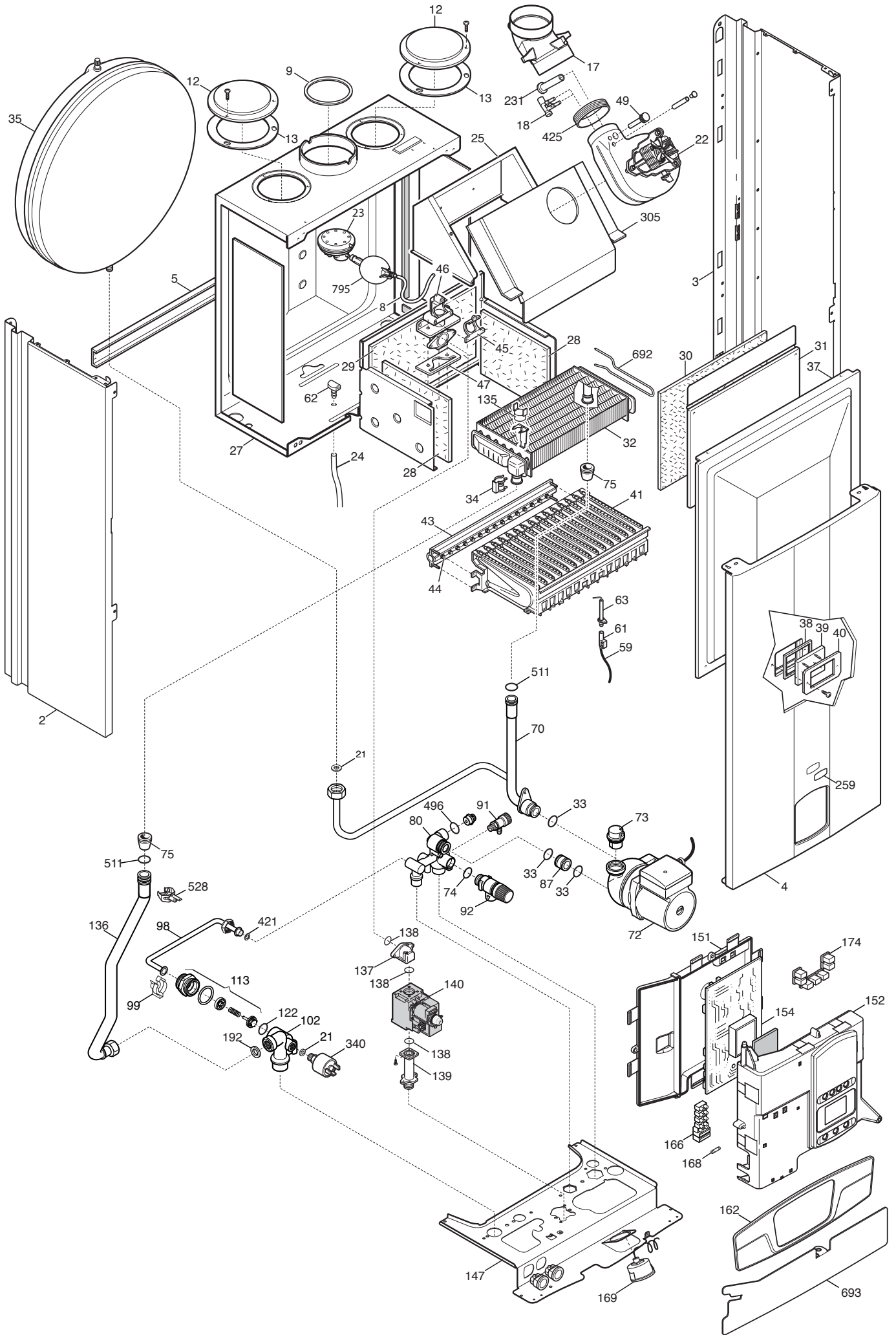
Pos	Code	Description code	CSE46243543/4/5 24 F						To serial number	From serial number	Intercha ngeable:
			CSE46243542/3/4 24 F	CSE465143542/3 1.24 F	CSE461243541/2/3 1.24 F	CSE461143541/2 1.14 F	CSE465143542/3 1.14 F	CSE461243541/2/3 1.24 F			
37	5663830	SEALED CHAMBER FRONT PANEL		•	•	•					
38	5401610	VIEWING WINDOW GASKET		•	•	•					
39	5203930	VIEWING WINDOW		•	•	•					
40	5103360	SURROUND - VIEWING WINDOW		•	•	•					
41	5663710	BURNER ASSEMBLY (13 ELEM.)			•	•	•	•			
41	5665980	BURNER ASSEMBLY PERFORMA 12e	•	•							
43	5665960	GAS RAMP 10 HOLES d.1,18	•	•							
43	5698690	GAS RAMP 13HOLES/INJECT. d1,18			•		•				
43	5698700	GAS RAMP 13HOLES/INJECT. d1,28				•		•			
44	5666400	NATURAL GAS INJECTORS KIT				•		•			
44	5669460	NATURAL GAS INJECTORS KIT	•	•	•		•				
44	5680020	TRANSFORMATION KIT G31	•	•	•	•	•	•			
45	5407940	GASKET-BURNER MANIFOLD	•	•	•	•	•	•			
46	5657180	ADAPTOR-MANIFOLD	•	•	•	•	•	•			
47	5407810	GASKET-MANIFOLD ADAPTOR		•		•		•			
49	5409520	HOSE ADAPTER CAP		•		•		•			
59	710430800	IGNITION CABLE L=250 RESIST.	•	•	•	•	•	•			
61	5407830	INSULATION BOOT - ELECTRODE	•	•	•	•	•	•			
62	5409570	SEALED CHAMBER HOSE ADAPTER		•		•		•			
63	8422570	ELECTRODE - IGNITION	•	•	•	•	•	•			
70	5676860	PIPE ASS.(PUMP/EXCHANGER)ECO3		•		•		•			
70	5677270	PIPE ASS. (PUMP/EXCHANGER)	•		•		•				
72	722275900	PUMP 1 SPEED NO CE	•	•	•	•	•	•			
73	607290	AUTOMATIC AIR VENT	•	•	•	•	•	•			
74	5406360	O-RING 14X1,78 EP	•	•	•	•	•	•			
75	5404670	GROMMET - PIPE ASSEMBLY		•		•		•			
76	711612600	DHW PLATE EXCHANGER 10 PLATES					•	•			
77	711613500	DHW PLATE EXCHANGER OR					•	•			
80	5655650	HYDRAULIC INLET ASSY	•	•	•	•					
80	711608300	HYDRAULIC INLET GROUP					•	•			
81	620340	FILTER-TRASDUC GROUP -100078-					•	•			
87	631680	PUMP CONNECTING ELEMENT/OR	•	•	•	•					
87	711652300	PUMP CONNECTING ELEMENT/OR					•	•			
90	620890	FILLING GR.WITH TURBINE 120074					•	•			
91	5652030	DRAINING TAP	•	•	•	•	•	•			
92	9951170	SAFETY VALVE 3 BAR	•	•	•	•					
92	710109400	HYDRAULIC SAFETY VALVE 3 BAR					•	•			
98	5676330	BY-PASS PIPE ASSY-SYSTEM	•	•	•	•					
99	8380850	FIXING CLIP	•	•	•	•					
102	5677030	HEATING/BY PASS ASS. 15.0479	•	•	•	•					
102	711606000	3 WAY VALVE ASS.					•	•			
113	617100	BY-PASS GR.	•	•	•	•					

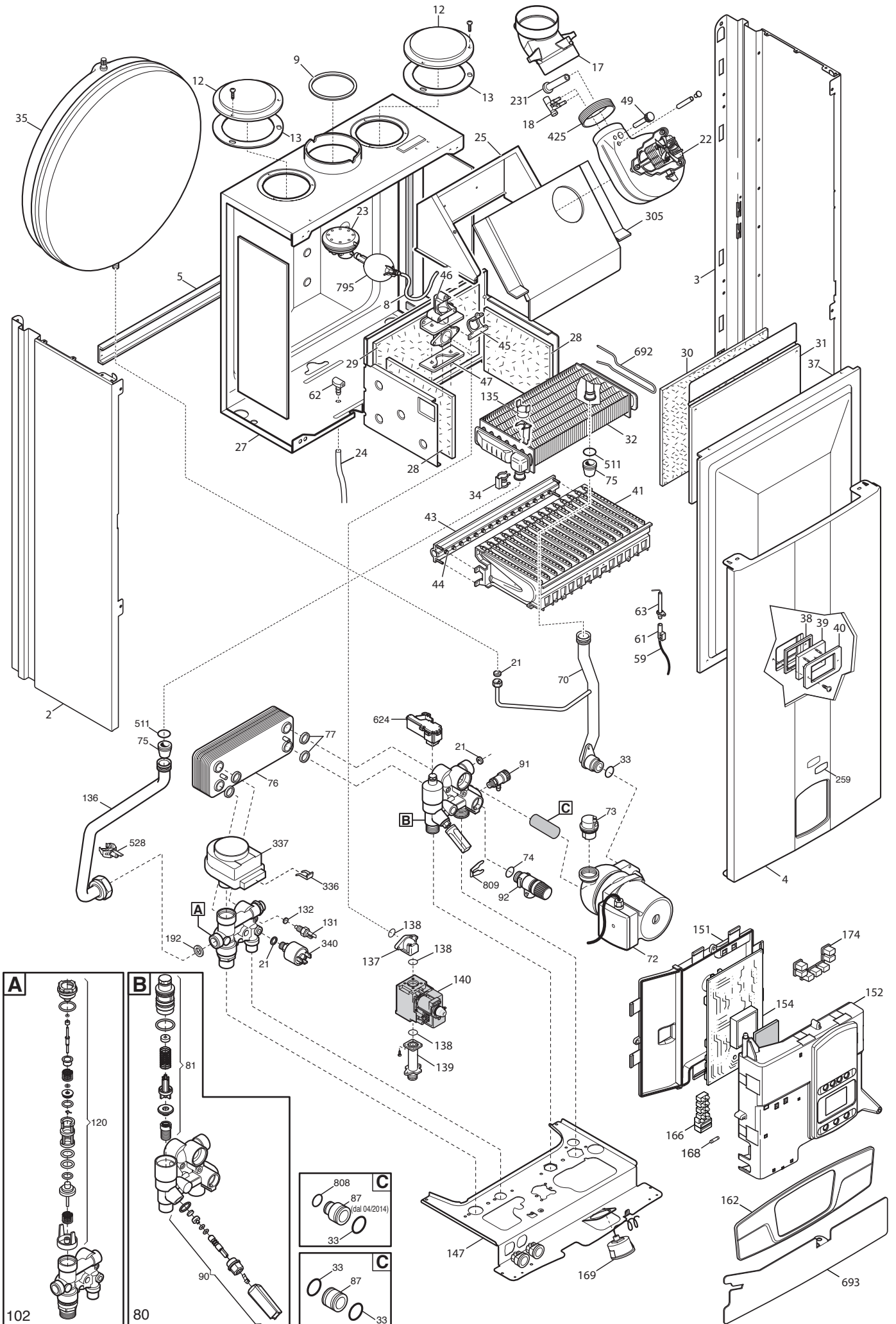
Pos	Code	Description code	<div style="display: flex; justify-content: space-between; font-size: 8px; margin: 0;"> CSE461143541/2 1.14 CSE465143542/3 1.14 F CSE461243541/2/3 1.24 CSE465243542/3/4 1.24 F CSE462243542/3/4 24 CSE46243543/4/5 24 F </div>						To serial number	From serial number	Intercha ngeable:
120	711356900	3 WAY VALVE CARTRIDGE									
122	5405370	O-RING	•	•	•	•					
131	8435400	NTC SENSOR					•	•			
132	5402830	WASHER - SENSOR SEALING					•	•			
135	9951610	LIMIT THERMOSTAT 105°C	•	•	•	•	•	•			
136	5676870	PIPE ASS.(3 WAY VALVE/EXCHANG)		•		•		•			
136	5677260	PIPE ASSEMBLY (3 WAY VALVE/EX)	•		•		•				
137	5214270	GAS V. ELBOW OUTLET OPEN FLUE	•		•		•				
137	5214280	GAS VALVE ELBOW OUTLET FF		•		•		•			
138	5402010	O RING 22.22x2.62	•	•	•	•	•	•			
139	5206620	CONNECTOR-GAS VALVE INLET	•	•	•	•	•	•			
140	5653610	GAS VALVE - SIGMA 845048	•	•	•	•	•	•			
140	5665220	GAS VALVE HON.	•	•	•	•	•	•			
147	5693850	CONNECTION TRAVERSE ECO4	•	•	•	•		•			
151	631660	CONTROL PANEL COVER ECO4	•	•	•	•	•	•			
152	5698880	CONTROL PANEL ECO4 BAXI	•	•	•	•	•	•			
154	5702450	PCB GROUP BERT&PART HDIMS 02	•	•	•	•	•	•			
154	710825300	PCB SM11469	•	•	•	•	•	•	1607		
162	5702560	PANEL PLATE ECOFOUR BAXI	•	•	•	•	•	•			
166	5688430	TERM.BOARD/DOUBLE FUSE HOLDER	•	•	•	•	•	•			
168	9950580	FUSE		•		•		•			
169	9951650	MANOMETER D.40	•	•	•	•	•	•			
174	5414010	KEYBOARD ECO4 BAXI	•	•	•	•	•	•			
192	5404650	SEALING WASHER G 3/4	•	•	•	•	•	•			
231	5409480	FLUE INTAKE		•		•		•			
241	5668420	CONVEYOR ASSEMBLY			•		•				
241	5678060	FLUE CHAMBER ASSEMBLY 14KW	•								
242	606930	FLUE SAFETY THERMOSTAT 60C	•								
242	616160	FLUE SAFETY THERMOSTAT 70ø			•		•				
259	5681120	BRAND BAXI LUNA3	•	•	•	•	•	•			
305	5113810	EVACUATION SMOKE CHIMNEY		•		•		•			
336	8380680	CLIP-RETAINING						•			
337	5694580	3 WAY VALVE MOTOR					•	•			
340	9951690	PRESSURE SWITCH	•	•	•	•	•	•			
421	5408270	O-RING 11,91 X 2,62 NBR	•	•	•	•					
425	5412270	GASKET FAN		•		•		•			
496	400020	O-RING	•	•	•	•					
511	5404600	O.R. 17,86x2,62	•	•	•	•	•	•			
528	8435500	NTC SENSOR D18-ITS2410201/0-	•	•	•	•	•	•			
624	8435380	FLOW RILEVATOR					•	•			
692	5114360	PRIMARY EXCHANGER CLIPS	•	•	•	•	•	•			
693	5117440	PRINTED CNTR. PANEL PROTECTION		•							

Pos	Code	Description code	CSE46243543/4/5 24 F							To serial number	From serial number	Intercha ngeable:		
			CSE46243542/3/4 24 F	CSE46243542/3/4 1.24 F	CSE461243541/2/3 1.24 F	CSE465143542/3 1.14 F	CSE461143541/2 1.14 F	CSE461143541/2 1.14 F	CSE461143541/2 1.14 F					
693	710471300	PRINTED CNTR. PANEL PROTECTION	•		•	•	•	•						
795	710447300	CONDENSATE TRAP		•			•	•						
808	721311400	O-RING 18X2						•	•					
809	711615000	SPRING						•	•					
999	8414540	CABLE ROOM TH	•	•	•	•	•	•	•					
999	8414620	POWER CABLE	•	•	•	•	•	•	•					
999	8419040	CABLE - EARTH	•	•	•	•	•	•	•					
999	8513640	LOW VOLTAGE WIRING ECO4						•	•					
999	8513650	LOW VOLTAGE WIRING ECO4 ATM	•		•			•						
999	8513660	FAN WIRING ECO4		•			•		•					
999	8513670	LOW VOLTAGE WIRING ECO4 FF		•			•		•					
999	8513930	HIGH VOLT.WIRING ECO4 SIT MON.	•	•	•	•								
999	8513940	HIGH VOLT.WIRING ECO4 HON.	•	•	•	•								
999	8513950	LOW VOLT.WIRING ECO4 MONOTHER.	•	•	•	•								
999	8612480	HIGH VOLTAGE WIRING ECO4 HON.							•	•				
999	710861400	HIGH VOLTAGE WIRING							•	•				









BAXI

**BAXI S.p.A.
Via Trozzetti, 20
36061 BASSANO DEL GRAPPA (VI)
ITALY
Tel. +390424517111
Telefax +390424517379
E-mail. service@baxi.it**